

**The Namibian Economic
Policy Research Unit
(NEPRU)
Windhoek**

ANNUAL REPORT VIII

1 April 1997 - 31 March 1998

P O Box 40710, 59 Bahnhof Street
Windhoek, Namibia
Tel.: 264-61-228284
Fax: 264-61-231496
e-mail: nepru1@nepru.org.na
internet: www.nepru.org.na

TABLE OF CONTENTS

DIRECTOR'S INTRODUCTION	3
NEPRU'S INSTITUTIONAL SET-UP.....	4
FUNDING.....	6
STAFF.....	9
TRAINING.....	13
RESEARCH AND WORK PROGRAMME.....	14
PUBLICATIONS	17
INFORMATION RESOURCES	18
INFORMATION TECHNOLOGY.....	20

Appendices

I	NEPRU Project List.....	21
II	List of Publications	35
III	List of Selected External Publications by NEPRU Staff Members 1997/98	40
IV	Participation of NEPRU Staff in International Conferences and Courses 1997/98.....	43

Director's Introduction

NEPRU's Annual Report for 1997/98 is the eighth in the Unit's existence. It summarises the main characteristics and activities of the institution from a historical perspective, while highlighting achievements during the period under review. In line with our aim of being accountable and transparent, the Report also includes as appendices updated overviews on our publications, previous and current projects, as well as the attendance of international conferences during the year. Once again, we have used the opportunity of a late deadline to reflect such events as staff developments and current research and training activities which took place after the official end of the annual cycle, coinciding with the Financial Year of the Government of the Republic of Namibia. Instead, we have updated information to August 1998.

As has been the case previously, the audited report for the financial year ending 31 March 1998 was submitted before the compilation of this Report, by the Chartered Accountants of "Grand Namibia". The Unit had an overall income of 3.3 million N\$, which is an increase of about 10%. Our project-related own income from research activities not covered under the grant agreement with the African Capacity Building Foundation (ACBF) amounted to roughly 1.2 million N\$, which as more than a third, constitutes a remarkable contribution towards the sustainability of our institution.

Since early 1998, NEPRU has actively implemented the recommendations of the mid-term review undertaken jointly with the ACBF in late 1997. The results include a considerable expansion of its Board of Trustees and an internal restructuring process into clearly demarcated administrative, research and training sections, each under the responsibility of a coordinator. We have furthermore made significant progress in terms of internal capacity building as a necessary step towards increased Namibianisation, by placing a total of five junior researchers in further academic studies abroad.

Visible recognition of our impact in terms of policy advice is i.a. the appointment of two members of NEPRU to the President's Economic Advisory Council in 1997, and the appointment of one staff member to the National Planning Commission in 1998. In addition, NEPRU continues to be involved in consultancy functions and advisory roles in a variety of Government activities, whilst at the same time pursuing its commitment towards disseminating relevant analysis of macro- and socio-economic issues by means of own research and publishing activities.

We trust that our ongoing efforts to enrich public discourse in a meaningful and constructive way, as well as our further accumulation and sharing of knowledge for political decision-making, is consolidating our reputation as a committed civil society actor contributing to the well-being of our country and its people.

Dr. Henning Melber

Director

NEPRU's Institutional Set-up

The establishment of NEPRU should be seen against the background of the challenges facing the democratically elected SWAPO government at Independence in March 1990. Pre-independent Namibia had been ruled from Pretoria as a *de facto* province of the Republic of South Africa. Here, political independence did not only entail transition from colonial status to national sovereignty, but also the awesome task of breaking a vast territory away from the all-encompassing grip of its immediate neighbour and former ruler. The Namibian economy was closely integrated with, and dependent upon, South Africa and the pre-independence provincial status had left the new nation without such basic tools for economic planning and administration as proper national accounts, reliable statistics or even population figures. To create these tools, train the people to handle them and build the necessary institutions for economic policy formulation and implementation were among the first tasks faced by the incoming government.

NEPRU was established through close co-operation between the Economic Secretariat of the South West Africa People's Organisation (SWAPO) and the Chr Michelsen Institute (CMI), Bergen, Norway, during the pre-independence period January to March 1990, having as its main objectives:

- to assist the Government of independent Namibia through applied research for policy formulation and decision-making in strategic economic and socio-economic areas;
- to build an information resource base on Namibian affairs; and
- to train Namibians in relevant research skills.

The Unit functions as an autonomous institution and is governed by an independent charitable and educational trust, the Namibian Policy Research Trust, established on 27 February 1990. The founding members are:

- Hon. Ben Amathila, (Founder), then designated Minister of Trade and Industry, and since April 1993 Minister of Information and Broadcasting;
- Dr. Kaire Mbuende, then designated Deputy Minister of Agriculture, Water and Rural Development, and since January 1994 Executive Secretary of the Southern African Development Community (SADC);
- Dr. Peter Katjavivi, then member of the Constituent Assembly, and now Vice-Chancellor of the University of Namibia.

Furthermore, as *ex-officio* members, the Permanent Secretary of the National Planning Commission and the Director of NEPRU were co-opted to the Board of Trustees in October 1994. In April 1998, the Board appointed a further three members: Hon. Netumbo Nandi-Ndaitwah (Director-General of the Department of Women Affairs in the President's Office), Mrs Anne Gebhardt (2nd Vice President of the Namibia National Chamber of Commerce and Industry), and Mrs Nakazimbwe-Sekandi (Manager Corporate Affairs of Rössing Uranium Ltd.). With this expansion, the Board implemented a recommendation of the mid-term review undertaken jointly with the African Capacity Building Foundation, in so far as it secures a gender balance and cultivates links with the private sector.

Dr. Katjavivi served as NEPRU's first Director until August 1991. He was succeeded in an acting capacity by Nama Goabab, who in November 1991 was appointed Permanent Secretary to the National Planning Commission. The present Director, Dr. Henning Melber, took up his position on 1 June 1992.

Although formally autonomous and established on the initiative of SWAPO, NEPRU is closely linked to the Namibian Government. This is reflected in the Deed of the Namibian Policy Research Trust, which stipulates that "after independence, the activities (of the Unit) will be undertaken on behalf of the Government of Namibia". Thus, from Namibia's independence on 21 March 1990 until August 1998, NEPRU had implemented some 315 projects following requests from, or consultations with, various ministries. They ranged from inputs into President Nujoma's independence speech to research co-ordination for the National Land Reform Conference organised by the Office of the Prime Minister in June/July 1991, the local consultancy for the Namibian Public Expenditure Review, and a Public Sector Analysis, both carried out during the first half of 1994, the watch-dog function of government's Drought Aid Relief Programme in 1996 and a variety of contributions to the Small and Medium Enterprises discussion. Furthermore, we have increased our focus on poverty alleviation, regional and local authorities and the policy of decentralisation. NEPRU has also been involved in the mid-term review of the country's first National Development Plan. More recently, NEPRU staff contributed to the draft white papers on the National Energy Policy and Labour Based Works and participated in a review of the National Industrial Policy.

NEPRU's status as an autonomous non-governmental organisation was seen as transitional at the time of its establishment. Set up as a research facility for the incoming government, it was felt that the Unit, after an initial period, should be institutionally attached to the public sector. This was discussed in depth by NEPRU's Board of Trustees in August 1992, resolving that:

- the mandate of the Unit could best be fulfilled through its continuance as an autonomous institution, including financial matters, and that
- a formal agreement should be concluded between NEPRU and the National Planning Commission, covering part of the programming of research and related services requested by the Government of Namibia.

A draft text of an agreement - largely modelled upon so-called frame agreements between NEPRU's principal donor, the Government of Norway, and its co-operating partner, the Christian Michelsen Institute (CMI) - was adopted by the Board of Trustees in November 1992. It has subsequently been reviewed by the Attorney-General's Office for approval by the National Planning Commission. On 13th October 1994 the "Memorandum of Understanding" was finally signed between NEPRU's Director and the Director-General of the National Planning Commission on "Research Support and Related Services to the Government of Namibia".

With the conclusion of the agreement, NEPRU's attachment to the government had - as envisaged by the founders of the Unit - become institutionalised. The hitherto loosely defined relationship was formalised and structured in such a way as to be mutually advantageous, but also to clarify and emphasise NEPRU's function as an important resource for applied economic and socio-economic research in favour of

the development of Namibia. With this newly established relationship, NEPRU's autonomy as an independent body was further acknowledged.

NEPRU's institutional attachment to the government and the emphasis on its functions as a resource for applied development research does not mean that the Unit is turning its back on academia. On the contrary, in August 1992 the Board of Trustees recommended that NEPRU negotiates a parallel affiliation agreement with the University of Namibia, formally established on 1 September 1992 and destined to "become the principal intellectual centre of the nation and the main base for academic research". However, no such agreement has yet been signed.

In the meantime, NEPRU strives to maintain close relations with the Social Sciences Division (SSD) of the Multi-Disciplinary Research Centre (MRC) at the University of Namibia, which has specialised in socio-economic base-line and social and environmental impact studies. NEPRU and the SSD have jointly run a series of academic lectures, published a bulletin on current social science research in Namibia and, in general, kept each other abreast of relevant developments in their respective fields of competence. NEPRU and the SSD have also carried out joint projects and research programmes. At the beginning of 1996, a tripartite research agreement between NEPRU, SSD and CMI was receiving financial support from the Norwegian Government for an initial phase of one year. This culminated - parallel to our institutional exchange programme - in a joint workshop in February 1997, discussing a common research agenda. Since then, an application for renewed research co-operation has been financed by to the Norwegian Government. Research projects on poverty, migration and urbanisation have hence been started on a joint basis.

Funding

NEPRU owes its existence to generous grants from the Government of Norway, which amount to 20.9 million Norwegian kronor (NOK) in total - or approximately 9.7 million Namibian Dollars - for the period from the establishment of the Unit until 31 December 1995. During its initial phase, the support was extended by the Norwegian Ministry of Foreign Affairs as project support through CMI, comprising expatriate personnel, equipment, funds for recurrent costs and institutional services. Reflective of NEPRU's close relationship with the government and of its role in the economic development of the country, in February 1991 the Norwegian and Namibian Governments agreed to allocate an amount of NOK 6 million in the form of core support to the Unit from the bilateral Norwegian development assistance budget to Namibia for the 2-year period ending 30 June 1993. This support was extended directly to NEPRU by the Norwegian Agency for Development Co-operation (NORAD). For the same period NEPRU received a total of 1.5 million Swedish Kronor as core support from the Swedish Agency for Research Co-operation with Developing Countries (SAREC). Thus, for the period up to 30 June 1991, NEPRU's core financial requirements were covered through the Norwegian assistance via CMI, while NORAD and SAREC respectively covered 80 and 20 per cent of these requirements for the 2-year period 1 July 1992 - 30 June 1993.

NEPRU's relations with CMI continued beyond the initial project phase. Since the establishment of the Unit, CMI had seconded two senior researchers to NEPRU, and

in October 1991 the two institutions entered into an independent bilateral agreement on co-operation, covering the secondment of expatriate personnel, staff development, library exchange, research co-operation and institutional support. The agreement was extended in October 1992 to 31 December 1994. A new agreement, consolidating the co-operation, was signed between NEPRU and CMI at Bergen in late 1995. Since then, NEPRU's Librarian and a Junior Researcher have been on exchange programmes to the CMI, and NEPRU hosted three Researchers from CMI during 1996/97.

In addition to core funding from the Governments of Norway and Sweden, NEPRU has received substantial financial contributions for specific project activities from various funding agencies, including the African Development Bank (ADB), the Economic Commission for Africa (ECA), the African Economic Research Consortium (AERC), the European Union (EU), the Ford Foundation of the USA, the Friedrich Ebert Foundation of Germany, the Food and Agricultural Organisation of the United Nations (FAO), the French Mission for Co-operation and Cultural Affairs, the Gesellschaft für Technische Zusammenarbeit (GTZ), the International Labour Organisation (ILO), the British Overseas Development Administration (ODA), the Overseas Development Institute (ODI), the Organisation for Economic Co-operation and Development (OECD), OXFAM of the United Kingdom, the Swedish International Development Authority (SIDA), the United Nations Development Programme (UNDP), the United Nations Environmental Programme (UNEP), the United Nations Fund for Population Activities (UNFPA), the United Nations Industrial Development Organisation (UNIDO), the United Nations Information Centre (UNIC) and the World Bank. With this in mind, the Unit is quite confident that financial resources for project activities on commercial terms may also be raised in the future. Our audited report (financial year ending 31 March 1998) indicates a total income of 1,160,000 Namibia Dollar in the form of specific project commissions, compared to 1,264,000 in 1996/97, 943,000 in 1995/96, 834,000 in 1994/95 and 504,000 in 1993/94. This development illustrates our efforts towards greater self-sustainability by increasing and consolidating project-generated income.

Continued Norwegian support to the Unit was discussed by the Governments of Norway and Namibia in October 1992, where the Namibian delegation, as part of a renewed bilateral development co-operation programme, presented a request for NOK 8.1 million - corresponding to some 3.8 million Namibian Dollars - for core support to NEPRU for the period 1 July 1993-31 December 1995. The request stated that NEPRU had been "of greatest value to the government in shaping its policies and programmes in policy development fields". It also stated that the Namibian Government would remain NEPRU's principal client, and that the above-mentioned frame agreement would form the basis for establishing a co-operation programme between the Unit and the government. The National Planning Commission would serve as the competent Namibian authority, with respect to both the frame agreement and the design of a co-operation programme.

In June 1993, the Government of Norway agreed to the above-mentioned request and set aside the amount of NOK 8.1 million from NORAD's country allocation to Namibia for NEPRU during the period 1 July 1993 - 31 December 1995. At the same time, it was agreed that the continued core-funding of NEPRU by the Government of

Norway would come to an end at the latter date. A final contribution by the Swedish Government through SAREC was also extended in mid-1993, amounting to 800.000 Swedish Kronor - or approximately 310.000 Namibian Dollars - covering the period 1 July 1993 - 30 June 1994.

Finally, in 1993/94, NEPRU held successful discussions with the Harare-based multilateral agency, the African Capacity Building Foundation (ACBF), set up by the African Development Bank, UNDP and the World Bank to strengthen local capacity in policy analysis and economic management in Africa. Realising the need for the Namibianisation and consolidation of NEPRU, the Unit submitted a project proposal to the ACBF in May 1993, built around a) a training and career development programme for Namibian junior researchers in economics, aiming for full Namibianisation of the Unit by the year 2000, and b) a planned research programme concentrating on relevant sectors and issues.

The proposal was positively received by the ACBF. Following an appraisal of NEPRU and its future plans in Windhoek in November 1993, in mid-March 1994 the Executive Board of the Foundation approved a grant to the Unit of 2.4 million US Dollars over a five year period. In order to prepare for the Grant Agreement with NEPRU, an ACBF delegation visited Windhoek again in May 1994. The agreement was eventually signed in Windhoek in early November 1994 and became effective in March 1995. Since then, two appraisal missions by the ACBF Programme Officer have taken place - in 1995 and 1996 - while NEPRU reports on a quarterly basis to ACBF concerning its progress.

At the end of 1996, ACBF, after five years in operation, was evaluated and NEPRU assessed as one of the supported projects. The report, presented in early 1997, concludes that NEPRU has an outstanding record as a producer of policy-orientated research and a significant impact on public policy making. It recommends that ACBF considers support for a second or even third phase, given the fact that 'think tanks' globally rarely survive on their own income. During July 1997, the mid term review, assessing NEPRU's progress and constraints since the ACBF grant agreement became effective, was undertaken by a team comprising of ACBF's Programme Officer, NEPRU's Director and an independent consultant. The overall assessment on project performance has been positive, and opens up the prospects for obtaining further funds beyond the defined five year period of support originally agreed upon. Notwithstanding this encouraging achievement, the institution's major challenges will be threefold: to obtain a further degree of self-sustainability; to seek the diversification of further external assistance and material as well as technical support to the project; and to speed up the process of consolidation by further Namibianisation of staff at higher levels.

Staff

- Since 1990, NEPRU has faced fairly dramatic challenges, with a high turnover of staff and constant efforts to replace those leaving the Unit. At the end of 1997, the last member employed since the Unit's original establishment left. Close to fifty persons have joined and left the Unit since 1990. Most were professionals, who in many cases - all Namibians - joined the public service. They include NEPRU's Director, Dr Peter Katjavivi, who in February 1991 was appointed Vice-Chancellor of the University of Namibia, and his successor as (Acting) Director, Mr Nama Goabab, who was appointed Permanent Secretary in the National Planning Commission in November 1991. Therefore, a major problem faced by NEPRU has been the loss of competent Namibian professionals, which has affected the management and cohesion of the Unit considerably.

As stated above, the five year grant from the African Capacity Building Foundation is mainly intended for the implementation of NEPRU's training and career development programme for Namibian researchers, aiming at full Namibianisation of the Unit. Furthermore, NEPRU has received direct support from the German donor organisation Dienste in Übersee (Services Overseas) since June 1994. The organisation, an umbrella body of the Evangelical churches, has a long-standing record of direct personnel secondment by recruiting qualified experts for assignments in Third World countries. It covers most of the expenses for a German Senior Researcher. Starting in June 1994, the contract was for a six year period. In addition, another researcher funded by this agency joined the Unit in March 1997. During 1996, NEPRU undertook successful efforts to obtain additional support through the British Volunteer Service Overseas (VSO). As a result, two British Volunteers joined the organisation in February 1997 at the level of researchers, with special responsibilities in the fields of training and information technology.

NEPRU's permanent staff was composed in August 1998 of the following:

Director	Dr Henning Melber	Namibia
Research Co-ordinator	Dr Wolfgang Werner	Namibia
Training Co-ordinator	Dr Dirk Hansohm	Germany
Administration Co-ordinatrix	Mary Hansen	Namibia
Research Trainers	Klaus Schade	Germany
	Peter Nias	United Kingdom
Junior Researchers	Lesley Blaauw	Namibia
	Esau Kaakunga	Namibia
	Daniel Motinga	Namibia
	Hoster Bebi	Namibia
	Anna Erastus Sacharia	Namibia
	Ebson Uanguta	Namibia
	Jakob Orange	Namibia

Accountant	Gerald Boois	Namibia
Systems Administratrix	Aldenia Chaka	Namibia
Systems Assistant	Stuart Beattie	United Kingdom
Librarian	Hildegard van Wyk	Namibia
Librarian	Paulus Ashipala	Namibia
Executive Secretary	Martha Mogane	Namibia
Receptionist	Charmaine van Rooi	Namibia
Driver	Bennie Mureko	Namibia
Cleaner	Rebecca Gawanas	Namibia

NEPRU's permanent staff currently consists of 15 males and 7 females, of whom 18 are Namibians and 4 expatriates. NEPRU currently also has 2 external researchers on a part-time basis: Arne Wiig has been seconded to NEPRU from CMI in Norway for a period of 18 months, based within the Training Section. Laurent Liagré is working as the French counterpart on two projects within the Research Section, and is in Namibia for a 7 month period.

Since mid 1993 NEPRU has introduced a category called Research Associate, which is awarded to former senior staff members who have served the unit more than satisfactorily during their stay with us. Although this award does not imply remuneration of any kind, it does acknowledge the continued co-operation between NEPRU and these individuals. To date NEPRU has awarded the following persons "Research Associate" status:

Name	Former Position	Date Awarded
1. Simon Stone	Senior Researcher	June 1993
2. Tor Sellström	Deputy Director	May 1994
3. Richard Moorsom	Senior Researcher	June 1994
4. Kit Nicholson	Senior Researcher	September 1995

NEPRU hosts international and local researchers for short to medium term periods on a regular basis, as well as offering student internships or work placements. The researchers are usually contracted for specific projects with specific agreements, while internships are offered to students who show an interest in research and Namibian economic affairs. For the period under review NEPRU has made use of the consultancy services provided by the following consultants and interns:

NAME	PROJECT
Thomas Hastings (Intern)	Economic Trends Database
Brian Kahn	Monetary Policy Options
Sally Kahuure	English Editing
Hans Werner Matthai (M-Tech Namibia)	CAPAS
Transcript Services	English Editing
Eline van der Linden (Trendline)	CAPAS
Christiane Berker	Organisational Consultant
Christina Swart-Opperman	Organisational Consultant

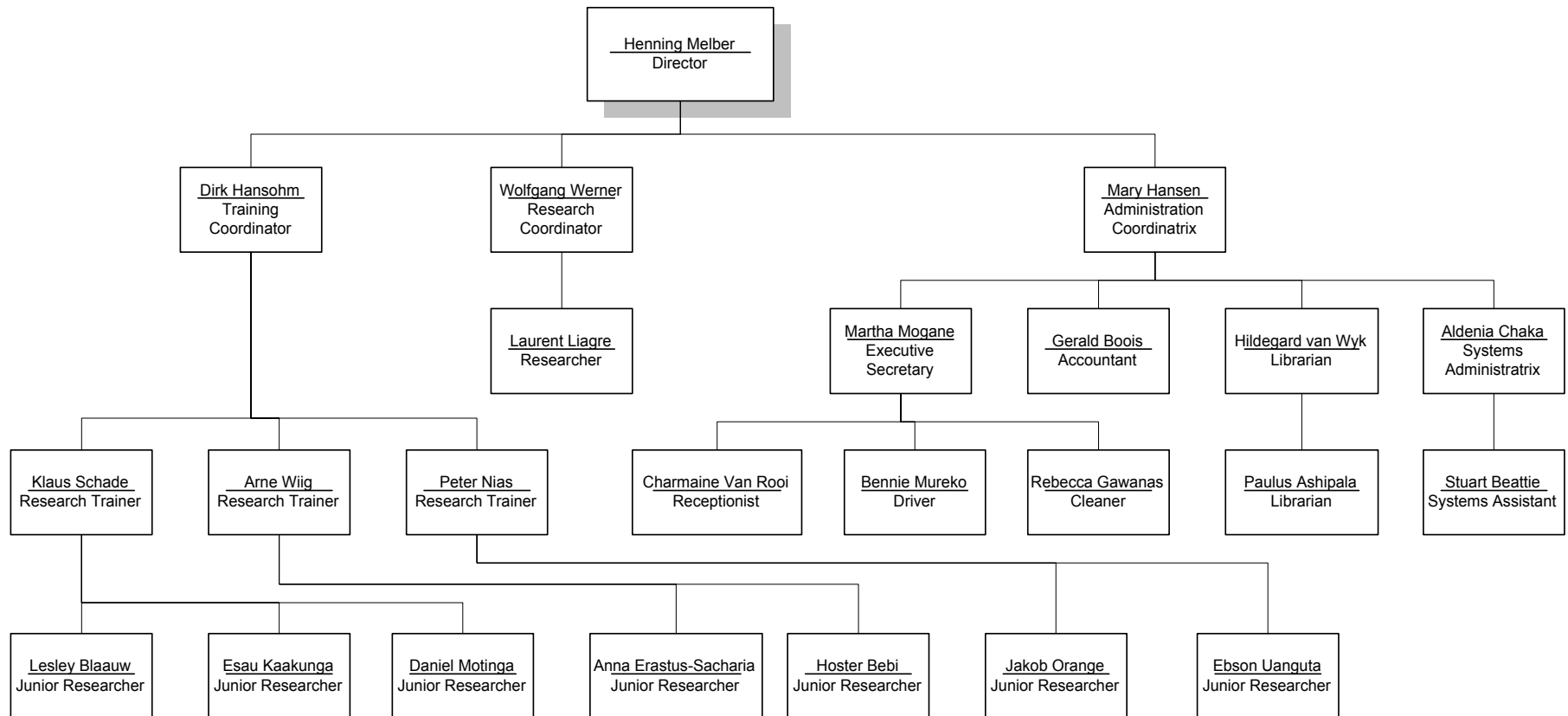
Since its establishment in February 1990, NEPRU has recorded the following staff developments:

DATE	TOTAL STAFF	PERMANENT STAFF			TEMPORARY STAFF			CONSULTANTS DURING PERIOD
		Total	Namibians	Expatriates	Total	Namibians	Expatriates	
January 1991	17	14	11	3	3	1	2	28
June 1992	17	15	11	4	2	2	-	15
June 1993	21	19	14	5	2	2	-	5
June 1994	20	18	15	3	2	-	2	6
August 1995	24	24	18	6	-	-	-	5
August 1996	22	22	19	3	-	-	-	5
August 1997	22	22	17	5	-	-	-	3
August 1997	22	22	17	5	-	-	-	3
August 1998	24	22	18	4	2	-	2	3

Following recommendations of the mid-term review, from early 1998 NEPRU has embarked upon an internal revision of its structures. Assisted by a consultant, the Unit in a joint in-house process implemented a restructuring of the activities and their management by separating the training and research components into two distinct divisions. At the end of the year under review, the following organisational chart was adopted and hence put in place:

Namibian Economic Policy Research Unit Organisation Chart

30 June, 1998



Training

The year under review has witnessed considerable development in the area of training. Following the appointment of a VSO staff member for this purpose in February 1997, a review of the training environment and needs was carried out. The subsequent report was adopted by the Management Committee, including six main topics for implementation: a research methods course, a proactive commissioning of NEPRU-useful training projects, the organisation of seminars with visiting speakers, in-house presentations, external visits by NEPRU staff to places of economic interest, and continuing on-the-job training advice as required.

Halfway through the year, an existing staff member moved from research project work to spending 80% of her time in the training division, with the aim of receiving training to equip her to take over that work when the Trainer's contract ends in 1999.

This enabled many more training activities to take place, with the research methods course being completed the most recently. External visits have included such places as the Namibian Stock Exchange, and the Ministry of Trade and Industry's Investment Centre. Amongst the topics presented by visiting speakers were "Economic developments in fishing assessments" and "The experiences of MA students abroad".

In addition to these activities, the training staff conduct continuous research into further academic training opportunities for NEPRU staff members. Within this year two junior staff members have successfully completed their Economics Honours degrees at UNISA. Another obtained his National Diploma in Public Management from the Polytechnic of Namibia.

During the period under review a number of junior staff members were also seconded on MA courses. One is currently doing a MA in Economics at Addis Ababa University in Ethiopia, another an MA in Development Economics at Williams College, Massachusetts in the USA; while 2 more left for Norway and the UK respectively for MA courses in 1998. In addition, two others are undertaking economics courses for non-degree purposes with UNISA.

Towards the end of 1997, a Senior Researcher from CMI was seconded to NEPRU for an 18 month period to focus on specialised training, particularly macro-economics and statistics.

Contracts with similar aims for other African - especially Southern African - institutions have also been pursued. To this effect, NEPRU's last Annual Report was sent to the fourteen English-speaking ACBF funded institutions, and thus far feedback has been quite positive, particularly with regard to potential staff exchange programmes.

The NEPRU Research Methods and Project Management course was offered for the first time during 1997, geared towards providing an overall foundation for implementing a research project. Integrated with the course was a practical training project which participants had to conduct for the Windhoek Municipality. The course also accommodated external participants from the Ministry of Environment and Tourism.

NEPRU junior staff members were also encouraged to make external presentations on the Namibian economy to other agencies upon request. To this effect two presentations were held at VSO Namibia for new groups of volunteers arriving in Namibia.

Research and Work Programme

NEPRU may best be described as a resource for applied macro-, micro- and socio-economic research. The projects vary in character and scope and have in the main been carried out at the request of various ministries. As will be seen from the attached project list (Appendix I), NEPRU has concentrated upon macro-economic issues, while project proposals of a non-economic nature in general have been deemed to fall outside the mandate of the Unit.

One of the main problems faced by NEPRU in the past has been that it has not been the 'master' of its own agenda. In the absence of a co-ordinating unit within government, ministries have on an *ad hoc* basis presented project proposals to NEPRU, which generally acted upon the proposals in order of submission rather than in order of priority. NEPRU's research agenda and general work programme were, therefore, mainly unplanned and non-prioritised, with a relatively short-term perspective. In turn, this made it difficult for the Unit to design and maintain a structure which, in an optimal way, could be responsive to the needs of government. Thus, at times NEPRU has been requested by different ministries to carry out several important assignments simultaneously, for which in-house person-power was not sufficient. The response on such occasions has been to recruit external consultants on a short-term, project related basis. Conversely, at times the government has not made efficient use of NEPRU's services. The frame agreement between NEPRU and the government of Namibia will hopefully remedy this situation, with the National Planning Commission serving as a 'clearing house' regarding research proposals submitted by government for implementation by NEPRU. Regular consultative meetings will be held between the Unit and the Commission to monitor the programme.

Another constraint in NEPRU's efforts towards securing continuity and consolidating its research agenda has been the comparatively high fluctuation of qualified research staff, which implies a changing pattern of available skills. Research priorities and competence, therefore, differ according to the composition of the personnel. With the grant from the African Capacity Building Foundation, the Unit is in a better position to introduce a stricter process of planning and conceptualisation of its research priorities.

Due to a generous grant by the Ford Foundation, NEPRU has been able to design and implement a first Research Programme on Poverty Alleviation. This programme includes a component of further co-operation with the SSD of the University of Namibia on related matters. With the future ACBF support, NEPRU aims to implement more Research Programmes in its areas of specialisation and expertise, to structure its research priorities in a more systematic way, and to link the ongoing project work with a wider context. Our Unit's efforts towards establishing a macro-economic model for Namibia and a Social Accounting Matrix would then be

integrated in a Research Programme of its own, and the same could be said for the numerous ongoing projects on small and medium enterprises, the informal sector and the labour market, and a variety of issues related to land.

Results of the ongoing research on poverty were presented to an international workshop in Gaborone in November 1997. In 1997 NEPRU participated in research in the context of preparation for a poverty strategy for Namibia, together with SSD, NPC, and the World Bank. In 1998 a large project was initiated in the area of the quantification of policy impacts on poverty, looking at the area of trade policy. These activities complement the poverty-related project undertaken jointly with CMI and SSD within the agreement of institutional co-operation.

In the area of micro, small and medium enterprises (MSME) promotion, NEPRU took part in the steering process of the formulation of a White Paper, assisted the MTI in formulating a policy on financing MSME, and participated in an update of its 1996 analysis of the financial services for MSME. At regional level, NEPRU participated in the establishment of a regional network of MSME service providers. For this, NEPRU conducted a background study on Namibia, and subcontracted similar studies for Zimbabwe, Zambia, Botswana, and Lesotho. Furthermore, NEPRU participated in a launching conference for this network, presenting an analysis of the determining factors for network success, and in a SADC conference on MSME promotion on a regional basis.

In the area of trade and industry policy, NEPRU was commissioned to draft Namibia's first trade policy review, an obligation under Namibia's membership in the World Trade Organisation. NEPRU also led an MTI team to review its 1992 industry policy. On the basis of this review, NEPRU will also lead the process of a reformulation of this policy. In the area of monetary policy, NEPRU presented an analysis of Namibia's options in international integration through the participation in various international conferences in Namibia. Since late 1997, NEPRU has led a UN-financed effort to enable the MTI to deal effectively with Namibia's policy towards trade in services through policy research and capacity building in the policy making institutions.

During the period under review the research into the effects of trade liberalisation on beef and maize was also taken further. Additional funding from the French Mission for Cultural Co-operation made it possible to carry out a beef commodity chain analysis in the North-Central communal areas. This study will provide valuable insights and data on the formal and informal beef trade in the region. It will enable policy makers to better understand the impact of trade and marketing policies on the different strata of beef traders.

Efforts to establish a regional policy research network also received a welcome boost in the form of funding to visit Botswana, Zimbabwe, Zambia and South Africa, with a view to discussing the establishment of a regional agricultural policy research network, based on work done in 1996. The idea to establish such a network received widespread support and will be pursued.

NEPRU also contributed substantially to an Advisory Mission for the Sustainable Animal and Range Development Programme (SARDEP) run by the Ministry of Agriculture, Water and Rural Development with technical assistance from GTZ. It

conducted research for SARDEP into the marketing of small stock in the southern communal areas.

On a policy level, assistance was given to the Namibia National Farmer's Union (NNFU) in formulating its position paper on land tenure reform in Namibia. Related to this, a short study was conducted into the enclosure of communal land in the east of the country. In addition, a critical review of the land reform process since Independence was undertaken. Papers on both projects were presented at international forums in Cologne, Basel and South Africa.

In a collaborative project with Vigne & Associates, NEPRU participated in a study on the implementation of stock branding legislation in the northern communal areas for the Ministry of Agriculture, Water and Rural Development. The branding of livestock is a sensitive matter in many parts of this region, and therefore requires careful consideration. The institutional co-operation with CMI culminated in NEPRU's participation in a consultancy undertaken on behalf of the Norwegian Ministry of Foreign Affairs. A research team investigated twinning arrangements between the Norwegian institutions and agencies in the South. The NEPRU team member was responsible for the Namibian case study in the oil and fisheries sectors.

NEPRU continued to participate in a variety of committees advising government in various areas of economic policy, including regional integration, trade and investment policy, finance policy as well as technology policy for MSME, competition policy, and labour statistics. NEPRU is represented on the Namibia Water Resources Management Review Task Force. In this capacity it will offer advice to the Review team and monitor its progress.

NEPRU's increasingly socio-political relevance in an advisory function is also underlined by numerous other activities: NEPRU staff is represented in both the Emergency Management Unit advising Cabinet and the National Emergency Committee established by the Office of the Prime Minister. NEPRU's competence and expertise has also been required in the Inter-Agency Technical Committee on Population, in advising the Windhoek Municipality Census and the National Household Income and Expenditure Survey. NEPRU is a member of the De-regulation Task Force of the Ministry of Mines and Energy and also represented on the National Agricultural Statistics Committee and the NPC Statistics Advisory Committee. Two senior staff members of NEPRU were appointed to the President's Economic Advisory Council. One of them is now serving on the co-ordinating committee, while the other has been appointed as a member of the National Planning Commission. The Research Unit's staff contributes to the production of the Human Development Report for Namibia, published by the local UNDP office. In addition, NEPRU's Director was appointed to the Review Committee for the Regional Human Development Report under preparation for Southern Africa.

Members of NEPRU have disseminated the results of their work in externally published articles (Appendix III) and attended international conferences related to aspects of NEPRU's programme (Appendix IV). NEPRU has also organised meetings on relevant contemporary topics, and offered guest researchers and visitors a public forum in which to share knowledge in a wider environment and enter into discourse with the intellectual community of Namibia. In line with these efforts to link the activities of NEPRU with an interested audience, the Unit is represented on a

number of established bodies. More prominently, NEPRU - jointly with the UNDP and the University of Namibia - is one of three initiators of a quarterly "Development Forum".

Many of NEPRU's economists are actively involved in the Namibian Economic Working Group (NEWG), with membership from government, the private sector and independent organisations. Public events organised during the period under review included panel discussions on unemployment, development strategies, and debt. The NEWG has, through joint efforts of the Friedrich-Ebert Foundation and NEPRU, been able to publish eleven issues of the "Economic Newsletter" up to mid 1998, covering a wide facet of economic issues and subjects.

Publications

An integral part of NEPRU's mandate is the dissemination of information, which it does by publishing its research results and related information regularly in various formats. In the area of reporting on the Namibian economy, the publication of NEPRU's Quarterly Economic Review has continued. The Review has established itself as a widely quoted piece of economic analysis in Namibia, and is now sent out by mail and e-mail to a wide network of interested parties in the country, region and overseas. For the first time, the Namibian Economic Review and Prospects was published in May 1998, based on an annual review of economic developments in all sectors, interviews with key players and a business climate review (by post). In May 1997 NEPRU participated in a regional business climate review, covering Zimbabwe, Botswana and South Africa. NEPRU's *book series* started the same year as its inception, 1990, while both its *research reports* and *working papers* series started in 1992. The series on *travel and meeting* reports cover the proceedings and findings of various conferences, workshops or seminars attended by NEPRU staff members, inclusive of fact finding missions. The *occasional papers* series started in 1995, with the aim of making available scholarly writings by external researchers for local distribution. During 1998 it started a new publications series referred to as *other publications*. The following are some of the unit's most recent publications (*for a more detailed list of publications, see appendix II*):

Book series:

Coping with Aridity. Drought impacts and preparedness in Namibia.

Macroeconomic modelling in Southern Africa

Other publications:

Overview of the Namibian Economy (NOT001)

Namibia Economic Review and Prospects 1997/1998 (NOT002)

Research Reports:

Monetary Options for Namibia (NRR016)

Community financing of rural water supply (NRR015)

Review of Public Enterprises and Parastatal Bodies in Namibia (NRR014)

Working Papers:

Namibian Business Climate: A survey in relation to SADC (NWP062)

Land Reform in Namibia: The First Seven Years (NWP061)

From Communal Pastures to Enclosures: The Development of Land Tenure in Herero Reserves (NWP060)

Travel and Meeting Reports

39th Annual Meeting of the African Studies Association, San Francisco, 23 - 26 November 1996 (NTMR015).

Third SEPAC Conference on Small Enterprise Promotion in Southern Africa, Gaborone, 31 October - 1 November 1996 (NTMR014).

Occasional Papers:

From Reserve to Homeland: South African "Native" Policy in Southern Namibia (NOP012).

Domestic Workers' Daily Lives in Post-Apartheid Namibia (NOP011).

Information Resources

One of the main objectives of NEPRU is to build an information resource base on Namibian affairs which can sustain its in-house research effort, supply essential information to government and act as reference point for external *bona fide* research institutions, individuals, donor organisations, NGOs and so on. To meet these demands, various resources - some existing and others at the design phase - were transferred to Windhoek and installed at the Unit during the first months of 1990. The main components of NEPRU's information resources are as follows:

1. The Namibian Socio-Economic Database, originally designed and developed under a bilateral project between CMI and the United Nations Institute for Namibia (UNIN) in Lusaka, Zambia. This unique database has presently some 13,000 time-series, to which new data can be added when available. In accordance with the original intentions, the Namibia Socio-Economic Database has been transferred via NEPRU to government and installed at the National Planning Commission.
2. NEPRU's economic database is a collection of data concerning the Namibian economy. While the data itself is stored in a database in Microsoft Access, it can

all be easily accessed through Excel spreadsheets which are located on the NEPRU server and are accessible from every computer at NEPRU. In time, the database should also be available on the NEPRU web site, meaning that researchers or potential investors the world over would have access to an extensive and up-to-date statistical picture of the Namibian Economy.

All of the information in the database has been taken from other sources - in most cases the CSO's National Accounts and Statistical Abstracts, or the Bank of Namibia's Quarterly Bulletins. In this sense there is no "new" information in the database, it is simply a collection of data from other publications. However, it is the most comprehensive collection of information on the Namibian economy that exists.

Work on the database first began in 1997. After establishing the basic structure of the database and entering most of the data, some additions and revisions made during 1998 made it easier to use. In the future, the maintenance of the database, including the entering of new data as it becomes available, will be part of the introductory training for all new Junior Researchers.

3. Transfers from personal collections and libraries. Parallel to the setting up of NEPRU, Richard Moorsom made a substantial part of his personal collection available to its library. Other contributions have come from CMI, visiting researchers and international organisations. Together with its extensive collection of Namibian Government and research documentation, NEPRU's library has grown to about 10,150 accessions and offers a substantial resource base for NEPRU's research programme, visiting consultants and government. To facilitate information retrieval by both NEPRU researchers and members of the public, a second computer was purchased for the library.

IntLEC CD-ROM, which is an index to international economics, development and finance, is newly available at the Unit. In addition, NEPRU switched over to the CDS/ISIS computerised library programme which is used by a large number of libraries in the Region. NEPRU signed up as a member of SABINET.

4. Clipping files: As from 1990, NEPRU has maintained a comprehensive daily coverage of information on economic and socio-economic developments in Namibia based on clippings from the country's daily and weekly newspapers.

In line with its commitment, NEPRU as an institution joined the Namibian Information Worker's Association (NIWA). NEPRU's Librarian represents the Unit on this body.

Finally, it should be noted that until recently, the information resources available in NEPRU's documentation centre have been almost exclusively limited to Namibian affairs, with only few textbooks and/or reference publications in economics and related social sciences. This shortcoming was rectified as from mid-1995, as a considerable amount of out of the above-mentioned ACBF grant is being used for the procurement of reference and source books. This is greatly enhancing the quality of NEPRU's documentation centre and - above all - supports the in-house training of young Namibian researchers.

Information Technology

NEPRU established its Information Technology (IT) Department in 1997. The aim of the department is to provide NEPRU with an up-to-date systems infrastructure to enable the organisation to achieve its corporate objectives.

The successful establishment of the department is attributed to the technical assistance NEPRU received from Voluntary Services Overseas (VSO) through the employment of a British Volunteer on a two year contract as a Researcher/Computer Trainer. The overall objective of his contract was to *establish an IT Department whose mission is to enable NEPRU to realise its corporate goals.*

To ensure self sustainability, NEPRU appointed one of its Namibian staff members to be trained under the guidance of this British Volunteer. The local staff member is now the head of the department and she continues to upgrade her skills through acquiring internationally recognised certifications.

One of the major achievements of the department since its inception was the implementation of NEPRU's own web site, which can be found at **<http://www.nepru.org.na>**. The aim of the web site is to enable NEPRU to make its research findings widely available, and also to trade its publications over the Internet. Publications such as NEPRU Viewpoint, which is distributed free of charge, can be downloaded from the site. The Viewpoint is also distributed by email and post/mail.

The department has also designed and implemented an economic database, known as the Ecotrend Database. The Database will also be made available on the Internet in the near future.

Since 1997, the department has been a member of the Namibian Information Technology Association (NITA), an association for computer professionals and computer users who have an interest in Information Technology. NITA published its Code of Conduct in March 1998, to which NEPRU made a significant contribution. At its fourth Annual General Meeting in September 1998, NEPRU's head of the NEPRU IT Department was elected to serve as a Member of NITA Board of Directors. She also serves as the Treasurer.

Appendix I

Completed Projects

as at 17-Dec-98

Number	Subject Group	Publication Number	Senior Leader	Other Team Members	Non-NEPRU Contributors	GRN	Short Title
P1	7	NRR1	JI			MTI	Implications of SACU for Namibia
P2	2		RM		PG	MTI	Lomé Convention and Namibia: Phase 1
P3	1		JI	PS RM	WWA, RHG	SH	Contribution to President's Speech 21/3/90
P4	3	NRR2	RMO	RM PV		MAWRD	Rural Development Priorities in Northern Namibia
P5	1		PK	RM	SB DH	MF	Abuse of State Assets
P6	1	NWP1	JA			NPC	Review of UNDP Base Studies
P7	3	NWP2	NG	SL		MAWRD	Public Expenditure Priorities for Communal Area
P8	2	NWP11	JI	PS		MTI	Industrial Policy Options
P9	1	NP1	JI	CH		MF	Workshop on Monetary Independence
P10	1		JI			MTI	Interministerial Coordination
P11	1		JI	RM BG		MTI	Restructuring of the FNDC
P12	1		JA			MLGH	Report on the National Housing Seminar
P13	3	NRR3	PV	EA EN KK		MAWRD	Agricultural Research, extension and training services
P14	2		DU			MTI	Compensation for Membership of the Common Monetary Area (CMA)
P15	2		JI	PN	UNDP		NGO Resources Flows
P16	7		RM	LH			NEPRU Library Database
P17	2		JI			MTI	Staffing and Establishment of MTI
P18	2		JI			MTI	Comments on a UNIDO proposals
P19	2		JI	JH SL		NPC	Workshop: "Aid, donors and development management"
P20	1	NWP7	NG	SL		MAWRD	Notes on Aid Management, Agriculture and Rural Development
P21	1	NRR7	RM	EM		NPC	NSD: Namibia Socio-economic Database
P22	3	NWP3	JH	RM		MTI	Synopsis and Assessment of FNDC project in East Caprivi
P23	2	NWP14	JO	RM		MTI	Briefing paper on Economic Links between Namibia and SA
P24	1		JI			MTI	Comments on the Draft Interim Statement on a Code of Conduct for Foreign Investment
P25	3	NWP4	JA			DWA	Integration of Women into the Rural Development Process
P26	7		JI			NA	Draft of speech for Dr Mose Tjitendero
P27	3		RM	JA		MAWRD	Agriculture credit scheme
P28	2		EvdL			MF	Evaluation of Namibian proposals for SACU
P29	2	NWP5	JI	RM			Comments on papers for Donors Pledging Conference
P30	1	NWP6	JI			MAWRD	Relationships between the budgetary and planning process in Botswana
P31	4	NWP12	RM	ST		MFMR	Fisheries policy options
P32	1		JI	RM SL		MTI	Contribution to the president's state of the nation address 1990
P33	1		JI			MTI	Comments on draft trade agreement Namibia-Botswana
P34	2		RM	CSm		MTI	IDDA: National programme for Namibia
P35	5		JH	RM		MMF	Comments on Petroleum Products and Exploration Bill
P36	5		JH	RM		MME	Comments on draft Petroleum Bill, Regulations and Taxation
P37	1	NRR6	EvdL			MF	Analysis of the Namibian tax system
P38	3		RM	NG DC		MAWRD	Rural Development Coordinating Council
P39	2	NWP8	PS			MTI	Namibia's External economic relations
P40	2		RM			MTI	MTI: draft speech on coops (NDT workshop)
P41	2	NRR4	RM	PG		MTI	Lomé Convention and Namibia: phase 2
P42	3		NG	RM		OPM	Conference on Land Reform and Land Question
P43	1		PK		DH	MFA	Colonial war preparations
P44	1		JI			MTI	Notes on the forthcoming Private Sector

Appendix I

Completed Projects

as at 17-Dec-98

Number	Subject Group	Publication Number	Senior Leader	Other Team Members	Non-NEPRU Contributors	GRN	Short Title
P45	2		RM	PS		MTI	Investment conference Comments on draft Namibia-Zambia Trade Agreement
P46	6		RM	RS PA	TSM	MWTC	Pre-feasibility Study on Port Facilities
P47	5	NWP23		EvdL WS	ADB	MME	Country Energy Survey
P48	6	NWP13		PK RM JJK	WK CSm	MFA	Walvis Bay report
P49	7	NWP35		EvdL JO		MF	Review of Namibian Trade Statistics
P50	7			PK	TWG	OVCD	Restructuring of Higher Education
P51	2	NRR8	SS	RS		MTI	Export Processing Zone (EPZs)
P52	1		SS	MG		NPC	Evaluation to CPI
P53	1	NWP29	HM	TS	CT	NPC SDA	Study on the Impact of Swedish Assistance to Namibia
P54	4		RM	PA	JI UNIDO	MFMR	Industrial Development in the Fisheries Sector
P55	6		RM			MFA MF	Walvis Bay Technical Committee
P56	2	NTMR5		JO RS PA JI	CS	MTI	Industrial policy statement
P57	2	NWP10		EvdL		MF MTI	Evaluation of proposed ADB Study for MTI and MF
P58	2		RM		CS IDU	MTI	Indicative Industrial Plan for Namibia
P59	3	NWP25	RM	JA SK		MAWRD	Socio-economic Survey of the Southern Communal Area
P60	4		RM		JI	MFMR	Comments on Draft Fisheries Policy Statement
P61	7		RM	PMH		OVCD	Role of historical research in the new university
P62	7		RM			OVCD	Technical assistance to Transitional Planning in the Higher Education Sector
P63	3	NRR5		EvdL RM JA PA RS		MAWRD	External trade and agricultural development
P64	7	NTMR2		TS RM NG			Social science research capacity
P65	4	NWP9		PA		MFMR	Present status of the Technical Committee on commercial farmland
P66	7		RM			OVCD	Comments on the report of the Commission on Higher education
P67	3		RM			OPM	Draft TOR for the Technical Committee on commercial farmland
P68	3		RS	RM		MTI	Implication of Meatco monopoly
P69	1		RS	EvdL TS PA		NPC	Comments on the draft (TNDP)
P70	7	NWP43		JA RB	RP NISER	MLMD	Study on war-affected people
P71	7		HM	HM EvdL SS DK	NANTU	MEC	Evaluation of teacher education
P72	7	NWP17		JA			Women's role in the development process with special reference to factors of production
P73	1		RM	RM MG RS	JD SAFER		The relationship between the Government Expenditure and Employment in Namibia
P74	5		RM	RS		MME	Establishment of database for the Mineral Economics Division, MME
P75	3	NWP34		EvdL PA		MAWRD	Socio-economic implications of Namibia's Northern border fence
P76	2	NWP24	TS	SK JO EvdL RS	ID	MTI	Study of regional economic integration
P77	3			PA		MAWRD	Review of Rural Development Centre in Ongwediva
P78	1					MFI	ADB: Economic prospects and country programme (EPCP) study
P79	7	NWP20	RM	RM SB	ECA	MAWRD	Popular participation in development
P80	1			RS SS		NPC	Editing of the TNDP
P81	1	NWP16	SS	SS RS		CSO	Study on Causes of Inflation in Namibia
P82	7			RM SB	UNV		United Nations Volunteer programme
P83	7		HM	PA JA		CSO	Population Distribution and Migration

Appendix I

Completed Projects

as at 17-Dec-98

Number	Subject Group	Publication Number	Senior Leader	Other Team Members	Non-NEPRU Contributors	GRN	Short Title	
P84	7	NWP18	TS			SH	Contribution to President's speech to the NUNW Conference	
P85	3	NTMR7	RM	PA	IFAD	MAWRD	Study on the veterinary cordon fence	
P86	2	NWP19	TS		AWEPAA		Report on the Angolan election	
P87	7		RM	JK		NEPRU	Database of research expertise	
P88	1		SS	SS	RS	NPC	Development planning manual and training workshop	
P89	4		RM	RM	PA JI	MFMR	Four concept on the implementation of the fisheries policy	
P90	4		RM	RM	SS PA	MFMR	Documentation and implementation of the fisheries sectoral model	
P91	2		EvdL	TS		MTI	Comments on the 1993 SADC consultative conference theme document	
P92	2		JO	SS		MTI	Comments on the draft incentives package	
P93	3		RM	RM	MG LH WS	NDTF	Demographic data on Ovamboland	
P94	3		RM	RM	TS	WW	OPM	Editing and publication of LRC documentation
P95	1		SS	SS	MG		NPC	Skills development programme
P96	1		TS	TS	SS		NEPRU BoN	Regional seminar on macro-economic modeling MF
P97	1	NWP36	HM	HM	CG	OBS	MLMD	Evaluation of the Otto Benecke Foundation programme
P98	2		TS	RS			MTI	Comments on the ADB regional intergration report
P100	4		RM	PA			MFMR	Review of the hake industry
P101	4	NWP26	RM	PA		PG	MFMR	Workshop on the Proposed EC-Namibia fisheries Agreement
P102	1	NRR14	KN	AAR	HS HV WS	WB/ACBF	MTI	Role of Public Enterprises
P103	7		SS	SS		NISER/SSD		Household subsistence levels and poverty in Namibia
P104	5		RM	RM	SK EvdL		MWTC	Green Plan: Energy security and sustainable development
P105	1	NWP37	SS	RS	MG	FES	MF BoN	Study of Namibia's borrowing and credit policies
P106	1		RM	RM	EvdL	TD AH	NPC	Macro-economic issues paper: Drought
P107	1	NWP51	HM	KN	WS MG	ACBF	NPC	Macro-economic issues: Inflation
P108	1	NWP31	RM	RS	MG SS		NPC	Macro-economic issues paper: Poverty and income distribution
P109	1	NWP32	SS	HM	JA SK		NPC	Macro-economic issues paper: Population
P110	1	NWP33	SS	EvdL			NPC	Macri-economic issues paper: Informal sector
P111	1	NWP38	RM	RM	All		MTI	Comments on the Presidents's speech to the National Council 23/02/93
P112	2		TS	TS	SK PA	ID	MTI	Seminar on Gross-border Trade Investment and Payments
P113	2		SS	EvdL	SK		MTI	Comments on the draft protocol on regional cooperation in industry, trade investment and finance
P114	2		SS	EvdL	SK		MTI	Comments on the draft treaty establishing the COMESA
P115	1		RM	RM			MTI	Editing of the draft Forbes article on Namibia
P116	1		SS	SS	All		NR	Review of the 1993/94 budget
P117	3		RM	JA	SK	WRI	MAWRD	Overview of NFO activities in the agricultural sector
P118	1	NP4	HM	RS	MG RM	WRI	NPC	Macro-economic modeling workshop
P119	4		RM	PA	BGK		MFMR	Review of fishing rights
P120	2		TS	TS	PA SK		MTI	Regional trade and investment
P121	3		HM	DH	PN DH JA		MAWRD	Support to Omafa
P123	3		TS	TS	CK IH		MAWRD	GRN and Caprivi cooperatives
P124	1	NP5	HM	JF	MM LH JA	UNEP TD	MAWRD	The macro-economic effects of drought
P125	1	NWP46	DH	DH	CK RM	NACCUL	MAWRD	Review of Credit Unions
P126	7	NWP45	HM	RM	JA CK HS		NPC	Development Services Directory
P127	5		TS	TS		US ADB		Energy study on RSA

Appendix I

Completed Projects

as at 17-Dec-98

Number	Subject Group	Publication Number	Senior Leader	Other Team Members	Non-NEPRU Contributors	GRN	Short Title	
P128	4		RM	RM	HS	NORAD	MFMR	Review of Norwegian support to the fisheries sector
P129	7		HM	HM	BGK		MEC	Review of education finance
P130	1		HM	KN	WS MG IT		NPC	Public expenditure review
P132	7		HM	HM	TS PN	AJ	NPC	Public administration analysis
P133	7	NWP42	RM	PA	CK		MRLGH	Women and self-help housing: Saamstaan case study
P135	3	NRR10	RM	JA	LAG	FAO	MAWRD	Women and agriculture
P136	3		IT	HM	JF MM PIH		MEC	Community financing in education
P137	7		IT	HM	JF MM PIH		MEC	Use and cost of hostels and boarding facilities
P138	1		HM	IT	MG TN DH	ACBF	Cabinet	World summit on social development
P139	2		HM	HM			MTI	Contribution to investment guide in Namibia
P140	1		DH	DH	PN HV	NNFU	MTI	Report on AGM of NNF
P141	7		IT	IT	TN TK DM			Reader survey for The Namibian Newspaper
P143	2		IT	KN	AAR TN WS	Imani	MTI	PTA COMESA study
P144	2		DH	DH	WS	FES		SME Comparative strategies
P145	7	NRR9	DH	MM	TK TN	BIB	MLRR	Disability and rehabilitation in Namibia
P146	2	NWP49	DH	DH	WS	ECA	MTI	Tecnology in informal sector
P147	2	NWP52	DH	DH	WS	ECA	MLHRD	SME Promotion in Africa
P148	1	NRR11	IT	JF	TN	FES	MLHRD	Financing vocational training
P149	7	NWP48	HM	HM		ACBF	NPC	Internal migration and urbanization
P150	1		IT	IT	MM TK	ACBF		Conference on marginalisation in Southern Africa
P151	7		HM			SAPES Trust		Essay on democratisation in Namibia
P153	7		DH	KN	WS CK	FC	MAWRD	Commercialization of services in Northern Namibia
P154	7		HM	TN	DM WS	MUN		MUN conference paper
P155	7		KN	WS		FES		EPZ Conference paper
P156	7		KN			ACBF	MTI	Comments on draft CBI letter
P157	7	NWP47	HM	MM	TK GK	SSD	Municipality	Urbanization policy discussion documents
P159	7		KN				NPC	NPC Training programme
P160	1	NWP50	DH	DH	GK TK AT	GOPA		Small enterprises park
P161	2		KN			M Clough	MWTC	Airplane proposals from Saudi Arabia
P162	7		DH	JF				Training needs in the Informal sector
P163	1	NVP1	KN		All	ACBF		Commentary on the economy - August 1995
P164	1		HM	IT	AT TN WW NO	SIDA		Public service analysis
P165	1		IT		HB KN AB	ACBF		Draft Quarterly fiscal review
P166	7		DH		HB MG NO	JCC/WCCI		Directory of SSE services
P167	1		IT	IT		ACBF	MF	Comments on the draft white paper
P168	7	NRR12	IT	IT	AT	MISA		Media training needs assessment
P169	7		IT	IT			MTI	Workshop report on regional integration for Southern Africa
P170	1		DH	DH	DM MG AB EK MM	SIDA/ACBF		Monetary policy
P171	1		DH	DH	HB	FES		Credit delivery system for SME
P172	1	NWP53	DH	MM	GK KN HB TN	Municipality TG		WHK economic development centre
P173	2		DH	JF		GTZ		Summary analysis of WVTC tracer survey
P174	2		DH	JF	LH			Analysis of WVTC business survey
P175	1		HM		TK AB	SARIPS		Annual country profile
P176	1		IT	KN		Hartlief		Financial feasibility studies: Game export
P177	7		WW	WW	MM		MRLGH	Shelter strategies
P178	7		DH	DH	AE GK	NNCCI		Needs assessment of the SMEs in Windhoek
P179	2	NWP59	WW	CK	HB	CRIAA		Meat marketing in Eastern Caprivi
P180	7		HM	HM				Human resources development at TransNamib
P181	3				DM	USAID	MET	Resources accounting
P182	7		DH	JF	CP AB EU	NRW/FES	MHEVTST	Methodology for training needs assessment

Appendix I

Completed Projects

as at 17-Dec-98

Number	Subject Group	Publication Number	Senior	Leader	Other Team Members	Non-NEPRU Contributors	GRN	Short Title
P183	7	NRR13	DH	JF	CP AB EU	NRW/FES	MHEVTST	Training needs assessment in Omaheke
P184	7		WW	MM	DM	BICON	MAWRD	Brukkaros irrigation scheme
P185	1		DH	DH	AT TK	NNCCI/ACBF		Economic Review 1995: trends & forecasts 1996
P186	3	NVP4	DH	CP	HB MH AB EU	ACBF		Quarterly Economic Review - September 1996
P187	1	NVP3	DH	HM	MM AE MH	ACBF		NEPRU Viewpoint Budget - August 1996
P189	3		WW	WW	MM TK	GTZ	MAWRD	Upgrading of the Neudam Agricultural College
P190	7		HM	CP	AB NO EU AC GK	UNIDO	DWA	Evaluation of projects of DWA
P191	1		HM			SARIPS		Constitutionalism in Namibia
P193	7			JF		GTZ		Evaluation of WVTC training programme
P194	1	NVP10	WW	PEN	DM AES EU	ACBF		NDP1 Viewpoint
P195	3		WW	WW				Land Tenure and Forestry Management
P196	7		HM	CP	HB AB NO	FES/NUNW/A CBF		Trade Union Economic Seminar: Budget
P197	1		DH	DH	AE GK	FES		SSE needs assessment in the coast
P198	2		DH		GK AES LB	IDRC		Comparative study of SME in Southern Africa
P199	3		HM	WW	AE TK	Oxfam UK/I		Integrated research programme on Omaheke Region
P200	3	NWP56	WW	MM	GK AES	FMCCA		Beef & Maize liberalisation in five SADC countries
P201	7		HM	HM	DH JF WW CP MH	UNDP		Human Development Report in Namibia 1996
P203	3	NWP60	WW			ACBF		Paper on enclosure of communal land
P205	7	NVP2	DH	CP	MH	ACBF		NEPRU Viewpoint Poverty - August 1996
P208	6		HM		HB	KIT		Namibia Integrated Health Programme
P209	2			CP	AB			Impact of Free Trade area between EU and SA
P210	3		WW			ODI		Privatisation of Rangeland Resources in Contemporary Namibia
P216	3		HM	WW	All JRs		OPM/MAWRD	Drought Aid Relied Programme
P217	3		HM	HM	MH	Buntstift		Evaluation of LRIC (Cape Town)
P218	2		HM	HM			MTI	Input to conference paper for Permanent
P220	7			MM		NNFU		Comments on restructuring Meat Board
P221	3			CP	MH HB	NAFAU		Hartlief Labour Dispute
P222	3	NVP6	DH	CP	MH AB EU	ACBF		Quarterly Economic Review - December 1996
P223	1	NVP5	HM		MH	ACBF		NEPRU Viewpoint: Urbanisation and Migration - October 1996
P224	1		HM	HM	DH WW CP MH AB	ACBF/ID/OG		Economic chapter to Namibia book
P225	3		WW	WW	DH WW CP MH AB	ACBF/ID/OG		Land Chapter to Namibia book
P226	6		HM	HM		ACBF/ID/OG		Public Sector chapter to Namibia book
P227	6		DH	HM		ACBF/AGS		Article on the Informal Sector
P228	7		DH			ACBF/NNCCI		Market orientated SSE promotion
P229	1		DH			ACBF/NNCCI		Economic Review of 1996, NNCCI workshop on 4/12/1996
P230	7	NWP54	DH	HM	WW CP MG MH	SIDA		SIDA Mid-term Review Paper
P232	2	NTMR14	DH	DH	AES	FES/IDRC		Third SEPAC Conference on SME
P233	1		HM	HM	MG TK	ACBF		Comment on the additional Budget 96/97
P234	3	NRR15	WW	CP	MH EU NO			Financial Management of Rural Water Supply
P235	2	NVP7	DH	CP	HB AB MH EU	ACBF		Quarterly Economic Review - March 1997
P237	2		DH	DH	GK	ACBF		Comments on the SME White paper
P238	7		DH	JF	AB EU HB	NRW/FES	MHEVTST	Training needs assessment in Caprivi
P241	7		HM			ACBF/NIED		Sub-regional Curriculum Conference
P242	2			MG	MG	ACBF/HSF		Namibia's Imports and Exports
P245	3		WW			SARDEP/GTZ		Evaluation of SARDEP - North
P246	7		HM			ACBF	OPM	Fiscal Constraint & Nation Building
P247	7		HM		NO EU	IDRC		Role of Donors in Namibia

Appendix I

Completed Projects

as at 17-Dec-98

Number	Subject Group	Publication Number	Senior Leader	Other Team Members	Non-NEPRU Contributors	GRN	Short Title
P248	7		HM		ACBF		Civil Society Actors in Southern Africa
P249	7		PEN	MH	ACBF		NEPRU Training needs assessment
P250	2	NVP11	DH	CP	HB MH DM FA KS WW		Quarterly Economic Review - June 1997
P251	2	NVP8	DH	PEN	HM EU		Viewpoint on Budget 97/98
P253	6		DH	PEN	CP KS		UN Poverty Programme
P254	7		DH		ACBF		Labour Market Institutions
P255	2		DH		TK MH MG		Trade Policy Review
P256	2	NVP017	DH		MM TK DM LB MH		SADC FTA Viewpoint No.17
P257	3		WW	CP			Review of Rural Development Support Programme
P258	6		HM		MH		CA/USAID
P259	2		DH	PEN	NO		KAF
P260	2	NOT002	DH	KS	HB EU DM FA EK NO PEN WW LB		ACBF Annual Economic Review of Namibia
P261	3		DH	DH			UNDP
P262	7		HM	PEN	HB LB		ACBF/ALAN
P264	6	NVP9	WW	MM	KS LB		ACBF
P265	6		DH	CP	KS AES		WB
P266	1		HM	KS	CP FA EU		ACBF
P267	1		HM				ACBF/NBC
P269	7		HM	MM			ACBF
P270	7		HM		EU MH DM EK		ACBF
P271	1		HM				ACBF/DSE
P273	3	NWP61	WW				BAB
P274	1		DH	CP			NNCCI
P275	2	NWP62	DH	PEN	NO		ACBF
P276	6		HM	PEN	LB		FES
P277	3		WW				MAWRD
P278	7		HM				RU
P279	7		HM				FES
P280	7		HM				DED
P281	7			PEN	KS LB		MBEC
P282	3		WW				SARDEP/GTZ
P285	7		HM				NORAD/CMI
P286	2		HM	DH			US Embassy/Rutgers/UNAM
P287	1	NVP12	DH	KS	EU FA HB HM		ACBF
P288	1		DH				ACBF
P290	7			CP			ACBF
P292	3		DH	CP			ACBF
P293	4	NVP15	WW	CP	DM PEN		ACBF
P294	1	NVP13	DH	CP	DM LB HB EK WW		ACBF
P295	1		DH				FNB
P296	6		WW				ACBF
P299	3		WW				Africa Groups of Sweden
P302	7		HM				DED
P303	7		HM				AGEH
P304	7	NVP14	DH	KS	DM EK LB WW		ACBF
P305	1	NVP16	DH	KS	DM EK LB		ACBF
P307	7		HM				DED

Appendix I**Completed Projects**

as at 17-Dec-98

Number	Subject Group	Publication Number	Senior Leader	Other Team Members	Non-NEPRU Contributors	GRN	Short Title
P309	3		WW	LB	Vigne & Associates Consultants		Consultancy to investigate the implementation of stock brands
P310	3		WW	SB		MLRR	Technical Assistance to Annual Report
P312	7		DH			MTI	Industrial Policy Review
P316	7		DH	PEN	NO	ACBF	Senior Schools Economics Training
P317	1	NVP018	DH	KS	LB NO	ACBF	Quarterly Economic Review - September '98
P319	7		DH		Sonnex Investments		Presentation on Economic Overview and Prospects
P320	7		HM		MBEC		Moderation at workshop proceeding
P321	3		WW		ACBF		An Overview of Land Reform in Namibia
P325	7		HM		ACBF/IPM		Presentation to the IPM
P327	3		WW	WW	SAPES Trust/ACBF		Land Reform in Namibia
P343	2			KS	NO	ACBF	Presentation on manufacturing sector at NNCCI seminar

Appendix I

Work in Progress:

as at 17-Dec-98

Number	Subject Group	Senior	Leader	Other Team Members	Non-NEPRU Contributors	GRN	Short Title
PROJECTS							
P142	7		SB	AC	ACBF		Computer training manual
P202	1	HM			TS/AJ/Sida		Publication Public Sector Analysis
P204	7	DH		AB HB	CISP		Adult Skills Development for Self-employment
P207	7	DH		GK LB	ACBF		Financial and Business Information Services for Small Enterprises
P211	2			AB	NORAD		Trade and Regional integration
P212	5	WW	WW		NORAD		Natural Resource Management
P213	3		CP		NORAD		Urban Development
P214	3	DH		CP MH	NORAD		Rural and Urban Poverty
P215	2	HM		HB	NORAD		Aid Effectiveness and the Implications of Foreign Assistance
P219	7	HM			MWTC		White Paper on Labour-based Works
P231	5	DH	KS	DM MM	MEPC/EDRC	MME	White Paper on National Energy Policy
P236	2	DH		AB MG	ACBF		Modelling Inflation in Namibia
P244	7	WW					PHD Supervision (Refugees Repatriation and Environment)
P252	5	HM	PEN	AES MH	ACBF		Environmental Enhancement
P263	3	WW		DM	SARDEP/GTZ		Capital Accumulation in Communal Areas
P268	1	HM			ACBF/NBC		Economic Forum
P272	3	WW			SARDEP	MAWRD	Land tenure in communal areas
P283	7	DH	KS	DM MH AES	SAPES		Literature Review on Poverty
P284	2	DH		MH	DSE/ACBF	MBEC	Namibia's Options in International Relations
P291	2	DH		EK	GTZ	MTI	National Policy on Financing SME
P297	1	DH	CP		EU	MTI	Midterm Review of Support to CBI
P298	1	DH		KS	Mercantile:/ACBF		Macro-economic overview
P300	1	DH		KS DM ARW LB	SSD/CMI/NORAD		Poverty & Macro-economics
P301	3	WW	LL	AES HB	FC		Regional Programme on Agricultural Policy Analysis
P306	1	HM		DH DM KS EK	ACBF		Viewpoint - No.18 Budget 1998/99
P308	7	DH		LB EK DM	United Nations		Implementation of CAPAS Programme
P311	3	WW			NNFU		Paper on Land Reform
P313	3	WW			MLRR/IBIS		Documentation of Namibia's flexible land registration system
P314	1	DH			CISP/FES		Study on financial services for SMEs in Namibia
P315	3	WW	LL		French Cooperation		Regional Network
P318	1	HM			ACBF		Economic Planning and Forecast work
P322	3	DH	DH	ARW KS DM LB	CROP/NORAD		Crop II Conference
P323	7	DH	DH	NO	World Bank		Labour Market Overview
P324	7	DH	DH		Deloitte and Touche/MTI/MWTC		Privatisation of Parastatals
P326	7	DH	DH		Austrian Parliament/ACBF		EU-SADC co-operation in a globalising world
P328	7	WW	WW		NDT/Vigne & Associates		RDC Feasibility Study
P329	1		KS		Deloitte & Touche/ACBF		Development of macro-economic and fiscal indicator in Namibia
P330	1	DH	KS	LB NO	ACBF		Quarterly Economic Review - No. 19
P331	1		KS		Commercial		Trends in the Namibian Economy

Appendix I

Work in Progress

as at 17-Dec-98

Number	Subject Group	Senior	Leader	Other Team Members	Non-NEPRU Contributors	GRN	Short Title
					Bank of Namibia		
P332	7		PEN		MTI		Training on Research Methodology
P333	1	HM	HM		FNB		Economic Review 1998 for FNB
P334	1	HM	HM		DED		Briefing of Volunteers (4/12/98)
P335	1	HM	HM		NAI		Conference Paper on "Nordic Solidarity"
P336	3	WW	WW		SARDEP		SARDEP Evaluation North West
P337	7	DH	KS	NO	Africa Groups of Sweden/ACBF		The development of Namibia's economy
P338	2	DH	DH		Konrad Adenauer Foundation/ACBF		Industry and Trade Integration in SADC
P339	1	HM	HM		Hans Seidel Foundation		Economic and Public Policy Report for Namibia
P340	7	HM			SIDA		Implementation of poverty reduction strategy for Namibia
P341	3	WW	WW		DFID/ACBF		Land tenure in Namibia
P342	2	DH	ARW	PEN	MTI/GTZ		SME Baseline Survey: Erongo & Otjozondjupa regions
P344	1	DH	DH		IASA		Alternative paths of economic development in Namibia
POVERTY RESEARCH PROGRAMME							
PRP1	1	HM	KN	DH IT MM TK MH	ACBF/FF		Poverty Review
PRP2	1	DH	CP	DM TN TK AAR AB	ACBF		Policy Framework
PRP3	1	DH	CP	DM GK TK	ACBF		Transfer
PROPOSALS							
N1	5	DH					Renewable Energy
N3	7	WW			University of Sheffield		Community and Household Investments in Natural Resources
N4	1	WW		KS HM LB	Jeffares & Green ICE		Feasibility Study of the Oranjemund Link Road
N5	1	HM			NDV		Documentary on the Namibian Economy
N6	2	HM	KS	AES HB NO			Namibia's Foreign Trade
N7	7	DH		PEN SB AES	DED/PSF		Self Evaluation of PSF
N8	3	WW			SARDEP/GTZ		SARDEP/GTZ evaluation in the North-West
N9	7	DH					Labour markets and labour policies in Namibia
N10	2	DH	CP		FES		Credit Delivery Study
N11	7	HM		EK			CMA Membership
N12	3	WW			DED		DED Support to Communal Farmers in Kavango
N15	3	WW			NOLIDEP		Livestock Marketing Study in the North
COMMITTEES							
COM6	1	HM		All Researchers	FES/ACBF		Namibia Economic Working Group
COM7	2	HM				MTI	Investment Advisory Committee
COM8	1	WW			ACBF	Cabinet	Emergency Management Unit
COM9	3	WW				MAWRD	National Agricultural Research Master Plan
COM10	7	HM				Cabinet	Interagency Committee on Population
COM11	7	HM		PA		ANP	Association of Namibian Publishers
COM14	7	DH			ACBF		CBI Technical Working Group
COM16	7	DH				MME	De-regulation Task Force
COM17	2	DH		TK	NNCCI		Business Linkages of the SME sector

Appendix I**Work in Progress:**

as at 17-Dec-98

Number	Subject Group	Senior	Leader	Other Team Members	Non-NEPRU Contributors	GRN	Short Title
COM18	7	HM				OPM	National Emergency Committee
COM19	3		MM			CSO	National Agricultural Statistics Committee
COM20	2	DH		TK AES	FES		JCC on SME
COM21	3	HM			UNDP/UNAM		Development Forum
COM22	7	DH	KS	EK		CSO	Labour Force Survey
COM23	7			DM			UNDP - Human Development Report
COM24	1	HM	DH			SH	President's Economic Advisory Council
COM25	2						Competition Steering Committee
COM26	2	DH		EK			Marketing Sub-committee on SME's
COM27	7	HM					Statistics Advisory Committee
COM28	7	WW					Namibia Resources Management
COM29	1	DH				NPC	National Planning Commission
DATABASES							
NDB1	1	DH	AC	MTM SB			Mailing List
NDB2	7	DH	KS	AC NO	ACBF		Economic Trends
NDB3	7		AC	SB MTM	ACBF		Projects and Publications

Appendix I Abbreviations Used in NEPRU Project Lists

Short Form	Full Text	Short Form	Full Text
Government		DÜ	Dienste in Übersee (Services Overseas)
C	Cabinet or Cabinet Committee	ECA	Economic Commission for Africa
DWA	Department of Women Affairs	EDRC	Energy Development Research Centre
GRN	Government of the Republic of Namibia	ERO	European Research Office
GS	Geological Survey	FES/FEF	Friedrich Ebert Stiftung/Foundation
LRC	Land Reform Conference	FF	Ford Foundation
MAWRD	Ministry of Agriculture, Water and Rural Development	FNB	First National Bank
MD	Ministry of Defence	FNDC	First National Development Corporation
MEC	Ministry of Education and Culture	GOPA	Gesellschaft für Organisation, Planung und Ausbildung (GmbH)
MET	Ministry of Environment and Tourism	GTZ	Gesellschaft für Technische Zusammenarbeit
MF	Ministry of Finance	HIID	Harvard International Institution for Development
MFA	Ministry of Foreign Affairs	HRC	Hardap Regional Council
MFMR	Ministry of Fisheries and Marine Resources	IAC	Investment Advisory Committee
MHA	Ministry of Home Affairs	IDRC	International Development Research Centre of Canada
MHEVTST	Ministry of Higher Education, Vocational Training, Science & Technology	IDU	Industrial Development Unit
MHSS	Ministry of Health and Social Services	IFAD	International Fund for Agricultural Development
MIB	Ministry of Information and Broadcasting	IPM	Institute of Personnel Management
MJ	Ministry of Justice	J&G ICE	Jaffares & Green Incorporated Consulting Engineers
MLHRD	Ministry of Labour and Human Resources Development	JCC	Jointly Consultative Committee
MME	Ministry of Mines and Energy	KAF	Konrad Adenauer Foundation
MRLGH	Ministry of Regional and Local Government and Housing	KIT	The Royal Tropical Institute
MTI	Ministry of Trade and Industry	LAPC	Land & Agricultural Policy Centre
MWTC	Ministry of Works, Transport and Communication	LM	Landell Mills, UK
MYS	Ministry of Youth and Sport	MEPC	Mineral Energy Policy Centre
NC	National Council	MISA	Media Institute for Southern Africa
NE	New Era	MRC	Multi-Disciplinary Research Centre (UNAM)
NIED	National Institute for Educational Development	NDC	Namibia Development Corporation
NPC	National Planning Commission	NDV	New Dawn Video
NR	Namibia Review	NISER	Namibian Institute for Social and Economic Research
OAG	Office of the Attorney-General	NNCCI	Namibian National Chamber of Commerce & Industry
OP	Office of the President	NNFU	Namibia National Farmers Union
OPM	Office of the Prime Minister	NRW	North Rhine Westfalia
SH	State House	OBS	Otto Benecke Stiftung/Foundation
Institutions		OECD	OECD Development Centre
ACBF	African Capacity Building Foundation	PSF	Private Sector Foundation
ADB	African Development Bank	SACU	Southern Africa Customs Union
AGEH	Arbeitsgemeinschaft für Entwicklungshilfe (AGEH)e.v	SADC	Southern Africa Development Community
AGS	Africa Groups of Sweden	SAM	Social Accounting Matrix
ANP	Association of Namibian National Publishers	SAPES	Southern African Political Science
AWEPAA	Association of West European Parliamentarians Against Apartheid	SARIPS	Southern African Regional Institute for Political Studies
BAB	Basler Afrika Bibliographien	Sida	Swedish International Development Agency
BoN	Bank of Namibia	SME	Small and Medium Enterprises
CISP	Comitato Internazionale per lo Sviluppo dei Popoli	SSD	Social Science Division (MRC) = NISER
CL	Coopers & Lybrand	SSE	Small Scale Enterprises
CMA	Common Monetary Area	TWG	Transitional Working Group
DAAD	(German Academic Exchange Programme) Deutscher Akademischer Austausch Dienst	UNAM	University of Namibia
DED	German Development Service (Deutscher Entwicklungsdienst)	UNDP	United Nations Development Programme
DSE	Deutsche Stiftung für Internationale Entwicklung (German Foundation for international Development)	UNEP	United Nations Environmental Programme
		UNIDO	United Nations Industrial Development Organisation
		UNV	United Nations Volunteers
		US	University of Stellenbosch

Appendix I Abbreviations Used in NEPRU Project Lists

Short Form	Full Text	Short Form	Full Text
VA	Vigne & Associates	PEN	Peter Edwin Nias
VSO	Voluntary Service Overseas	PIH	Pejarukeni Hiakaere
WB	World Bank	PK	Peter Katjavivi
WCCI	Windhoek Chamber of Commerce and Industry	PN	Paul Nashitati
WEF	World Economic Forum	PS	Paulo Shipoke
WTO	World Trade Organisation	RB	Ruth Bogosi
WVTC	Windhoek Vocational Training Centre	RM	Richard Moorsom
NEPRU		RS	Robin Sherbourne
AAR	Aida Abdul Rahim	SB	Stuart Beattie
AB	Anne-Marie Brits	SK	Saul Kahuika
AC	Aldenia Chaka	SS	Simon Stone
AES	Anna Erastus-Sacharia	SSh	Shirley Shivangulula
ARW	Arné Wiig	TH	Thomas Hastings
BGK	Brian Gei-Khoibeb	TK	Tjiuai Kanguuehi
CK	Christiaan Keulder	TN	Tangeni Nuukuawo
CP	Cathy Presland	TS	Tor Sellstrom
CR	Charmaine van Rooi	UBN	Uahatjiri Ngaujake
DH	Dirk Hansohm	WS	Wendlley Shiimi
DM	Daniel Motinga	WW	Wolfgang Werner
EG	Eline Gaoses	Non-NEPRU	
EK	Esau Kaakunga	ACB	Axel Christian Bernhard
EU	Ebson Uanguta	AH	Aenneli Hommes
FA	Felicien Arigbo	AJ	Anton Johnston
GK	Gerson Kadhikwa	AP	Anita Pfouts
GVK	Gift Viandjua Kavari	AR	Alun Roberts
HB	Hoster Bebi	AW	Alan Whiteside
HM	Henning Melber	BG	Ben Gassenelwe
HS	Hendrina Shiweva	CG	Colin Gleichmann
HV	Harison Vehonga Marenga	CG1	Chris Goodwin
HVW	Hilde van Wyk	CH	Charles Harvey
IT	Irene Thase	CS	Colin Stoneman
JA	Jochbeth Andima	CSm	Chris Smith
JF	Jutta Franz	CT	Chris Tapscott
JI	Jan Isaksen	DB	Daniela Belhardi
JJK	Jacob Katuamba	DC	Diana Callear
JMA	John Ashipala	DK	Daniel Kallos
JO	John Orford	EA	Erastus Awina
KKK	Kavevangua Kambushu Kahengua	EM	Einar Magnussen
KN	Kit Nicholson	EN	Enny Namalambo
KS	Klaus Schade	FM	Frank Matsert
LB	Lesley Blaauw	ID	Ingolf Diener
LG	Carolin Guriras	IH	Ian Heyes
LH	Lucia Haufiku	JD	John Davis
LL	Laurent Liagre	JDSO	John Olszewski
MG	Mihe Goamab	JH	Jan Hoffman
MH	Mary Hansen	KK	Kahijoro Kahuure
MK	Marianne //Kaoses	LAG	LoriAnn Girvan
MKU	Milly Kubos	OG	Oliver Graefe
MM	Moono Mopotola	PG	Paul Goodison
MTM	Martha Thandiwe Mogane	PH	Patricia Hayes
NF	Nino Frodema	PJ	Pavla Jeskova
NG	Nama Goabab	PMO	Peter Oates
NK	Nameni Kalili	PV	Piers Vigne
NO	Ntintin Oranje	RHG	Reg Green
PA	Peter Amutenya	RP	Rosemary Preston

Appendix I Abbreviations Used in NEPRU Project Lists

Short Form	Full Text	Short Form	Full Text
SL	Stephan Lister		
ST	Stefan Thorarisson		
TD	Tiny Dekker		
TG	Tsudaο Gurirab		
UB	Ulrich Bobinger		
WH	Werner Hillebrecht		
WK	Willy Klein		
WWA	Wilfred Asombang		

Subject

1	Macro-economy, Finance and Planning
2	Trade and industry, International Economics Relations
3	Agriculture, Water, Rural Development and Land Reform
4	Fisheries and Marine Resources
5	Mining and Energy, Environment
6	Physical and Social Infrastructure, Health Service Sector
7	Human Resources, Education, Demography, Employment, Industrial Relations, Information

Appendix II		NEPRU Publications		as at 17-Dec-98	
Publication ID	Title	Authors	No. of Pages	Year Published	Cost
BOOKS					
NB1	<i>Monetary independence for Namibia</i>	Charles Harvey & Jan Isaksen (eds)	122	1990	N\$25.00
NB2	<i>Aid, donors and development management</i>	Stephen Lister (ed.)	184	1991	N\$25.00
NB3	<i>National Conference on Land Reform and the Land Question, Windhoek, 25 June - 01 July 1991. Vol. 1, Research papers, addresses and consensus document</i>	Republic of Namibia - OUT OF PRINT	614	1992	N\$60.00
NB4	<i>Macroeconomic modelling in Southern Africa: a comparative perspective - ISBN 99916-38-03-2</i>	Simon Stone (ed.)	136	1996	N\$30.00
NB5	<i>Coping with Aridity. Drought impacts and preparedness in Namibia - experiences from 1992/93 - ISBN 99916-38-02-4</i>	Richard Moorsom with Jutta Franz & Moono Mupotola	251	1995	N\$50.00
NB6	<i>In Search of Research</i>	CMI/NEPRU/SSD	173	1998	N\$45.00
OTHER PUBLICATIONS					
NOT1	<i>Overview of the Namibian Economy</i>	Dirk Hansohm , Moono Mupotola-Sibongo & John Motinga	10	1998	N\$25.00
NOT2	<i>Namibia Economic Review and Prospects 1997/1998</i>	Dirk Hansohm & Klaus Schade	50	1998	N\$45.00
RESEARCH REPORTS ISSN-1026-9231					
NRR1	<i>Namibia and the Southern African Customs Union</i>	Jan Esaksen	18	1992	N\$14.00
NRR2	<i>Rural development priorities in northern Namibia</i>	Peter Oates & Piers Vigne	50	1992	N\$25.00
NRR3	<i>Agricultural research, extension and training services in Namibia</i>	Erastus Auino, Kahijoro Kahuure, Enny Namalambo & Piers Vigne	130	1992	N\$53.00
NRR4	<i>The European Community and Namibia: a user's guide to the Lomé Convention and the development resources of the EC annual budget</i>	Paul Goodison	63	1992	N\$29.00
NRR5	<i>Namibian agriculture: policies and prospects</i>	Walter Elkan, Peter Amutenya, Jochbeth Andima, Robin Sherbourne & Eline van der Linden	46	1992	N\$24.00
NRR6	<i>Namibia's tax system</i>	Eline van der Linden	87	1993	N\$38.00
NRR7	<i>Perspectives on the development of a statistical system for Namibia</i>	Helge Brunborg, Lasse Röberg & Liv Simpson	147	1992	N\$59.00
NRR8	<i>Export processing zones and their relevance to</i>	Robin Sherbourne	27	1993	N\$17.00
NRR9	<i>Disability and rehabilitation in Namibia: a national</i>	Barbro-Isabel Bruhns, Andrew Murray, Tjiuai Kanguuehi & Tangeni Nuukuawo	170	1995	N\$67.00
NRR10	<i>Namibia: National report on women, agriculture and rural development for the Fourth World Conference on Women</i>	LoriAnn Girvan	73	1995	N\$33.00
NRR11	<i>Financing the Namibian vocational training system</i>	Jutta Franz	95	1995	N\$41.00
NRR12	<i>Media training in Namibia</i>	Anna Erastus-Sacharia & Jutta Franz	152	1995	N\$61.00
NRR13	<i>An Assessment of Training Needs in Omaheke</i>	Anne-Marie Brits, Jutta Franz & Ebson Uanguta	135	1996	N\$54.00
NRR14	<i>Review of Public Enterprises and Parastatal Bodies in Namibia</i>	Aisha Abdel Rahim	93	1996	N\$40.00
NRR15	<i>Community financing of rural water supply</i>	Cathy Presland, Mary Hansen & Fred Greiner	81	1997	N\$36.00
NRR16	<i>Monetary Options for Namibia</i>	Brian Kahn, Daniel Motinga, Anne-Marie Brits, Moono Mupotola-Sibongo	109	1998	N\$45.00
WORKING PAPERS ISSN-1026-9258					
NWP1	<i>Review of four UNDP base studies on Namibia</i>	Jochbeth Andima	19	1992	N\$14.00
NWP2	<i>Expenditure Data and Analysis on the Central Revenue Fund and the Second-Tier Authorities</i>	Nama Goabab	80	1994	N\$35.00
NWP3	<i>Review of FNDC projects in the Caprivi area</i>	Jan Hoffman	13	1992	N\$12.00

Appendix II

NEPRU Publications

as at 17-Dec-98

Publication ID	Title	Authors	No. of Pages	Year Published	Cost
NWP4	<i>The integration of women into the rural development process</i>	Jochbeth Andima	32	1992	N\$19.00
NWP5	<i>Comments on papers prepared for the Donor Pledging Conference, June 1990</i>	Jan Isaksen	20	1992	N\$14.00
NWP6	<i>Budgets and plans: possible lessons from Botswana</i>	Stephen Lister	6	1992	N\$10.00
NWP7	<i>Notes on aid management, agriculture and rural development</i>	Stephen Lister	16	1992	N\$13.00
NWP8	<i>Namibia's external trade development prospects</i>	Paulo Shipoke	29	1992	N\$18.00
NWP9	<i>Notes on the present status of the rock lobster</i>	Peter Amutenya	12	1992	N\$12.00
NWP10	<i>African Development Bank proposal "Namibia: trade policy reform study": an evaluation</i>	Eline van der Linden	8	1992	N\$10.00
NWP11	<i>Some notes on an industrial policy for Namibia</i>	Jan Isaksen & Paulo Shipoke	16	1992	N\$13.00
NWP12	<i>Subsidisation, taxation and viability of the commercial agricultural farming sector. NEPRU background paper for the Land Reform Conference, 1991</i>	Peter Moll	53	1994	N\$26.00
NWP13	<i>Walvis Bay: report of a fact-finding mission</i>	NEPRU	24	1992	N\$16.00
NWP14	<i>Bilateral economic links between Namibia and South Africa</i>	John Orford	15	1992	N\$13.00
NWP15	<i>Notes on the housing situation and housing policy in Namibia. Prepared for the National Conference Operation Masakhane for the Homeless, Johannesburg, 29-30 April 1992</i>	Ruth Bogosi	5	1992	N\$9.00
NWP16	<i>The Consumer Price Index and inflation in Namibia</i>	Simon Stone	34	1993	N\$19.00
NWP18	<i>Some Notes on the Namibian economy two years after independence</i>	Tor Sellström	9	1992	N\$11.00
NWP19	<i>Observer's report on the Angolan elections, 29-30 September 1992</i>	Tor Selström	7	1992	N\$10.00
NWP20	<i>Assessment of popular participation in the formulation and implementation of development policies and programmes: a case study of Namibia</i>	Susan Brown	32	1992	N\$18.00
NWP21	<i>The monetary independence of Namibia</i>	Sophie Chauvin	18	1992	N\$14.00
NWP22	<i>Population distribution and migration</i>	Peter Amutenya, Jochbeth Andima & Henning Melber	18	1993	N\$14.00
NWP23	<i>Namibia's energy sector: a country review</i>	Eline van der Linden	41	1993	N\$22.00
NWP24	<i>Country report: Namibia's trade and investment</i>	John Orford, Robin Sherbourne & Eline van der Linden	50	1993	N\$25.00
NWP25	<i>Socio-economic survey of the southern communal areas 1992: summary</i>	Richard Moorsom, Jochbeth Andima & Saul Kahuika	31	1993	N\$18.00
NWP26	<i>A fisheries agreement between the European Community and Namibia: workshop report, Windhoek, 25 March 1993</i>	Richard Moorsom & Paul Goodison (eds)	92	1993	N\$40.00
NWP27	<i>Towards greater participation and equality? Some findings on the 1992 regional and local elections in Namibia</i>	Reinhart Kößler	10	1993	N\$11.00
NWP28	<i>The economics of the 1993/94 budget</i>	NEPRU	16	1993	N\$13.00
NWP29	<i>Swedish assistance to Namibia: an assessment of the impact of SIDA, 1990-1993</i>	Hennig Melber, Tor Sellström & Chris Tapscott	48	1994	N\$24.00
NWP31	<i>Poverty and income distribution in Namibia. Background paper for the NPC's macro-economic issues paper</i>	Simone Stone & Mihe Gaomab	30	1994	N\$18.00
NWP32	<i>Population issues in Namibia. Background paper for the NPC's macro-economic issues paper</i>	Jochbeth Andima, Saul Kahuika & Henning Melber	21	1993	N\$15.00
NWP33	<i>The role of the informal sector. Background paper for the NPC's macro-economic issues paper</i>	Eline van der Linden	17	1993	N\$13.00
NWP34	<i>The Namibia-Angola border fence and its socio-economic implications: report of a fact-finding mission, 17-20 June 1992</i>	Peter Amutenya & Eline van der Linden	24	1993	N\$15.00
NWP35	<i>An evaluation of current methods of collecting trade statistics in Namibia</i>	Eline van der Linden & John Orford	31	1993	N\$18.00

Appendix II

NEPRU Publications

as at 17-Dec-98

Publication ID	Title	Authors	No. of Pages	Year Published	Cost
NWP36	<i>Evaluation study of current methods of collecting trade statistics in Namibia</i>	Colin Gleichmann	46	1993	N\$13.00
NWP37	<i>The social dimensions of monetary, currency and credit policy in Namibia</i>	Robin Sherbourne	24	1993	N\$16.00
NWP38	<i>The private sector and employment: comments on aspects of the President's inaugural speech to the National Council on 23 February 1993</i>	Richard Moorsom	16	1993	N\$13.00
NWP39	<i>An analysis of the fishing capacity of the Namibian fleet in quota-limited fisheries: a methodological summary</i>	Richard Moorsom	61	1994	N\$29.00
NWP40	<i>Future agricultural trade and cooperation between new South Africa and Namibia. Papers presented to the Agricultural Outlook Conference, Windhoek, 10 March 1994</i>	Bank of Windhoek/AGRECONA	78	1994	N\$35.00
NWP41	<i>Economic analysis of land reform options. NEPRU background paper for the Land Reform Conference</i>	Ray Purcell	44	1994	N\$23.00
NWP42	<i>Urban women and self-help housing in Namibia: A case-study of Saamstaan Housing Cooperation</i>	Christiaan Keulder	21	1994	N\$15.00
NWP43	<i>Fiscal policy and employment in Namibia</i>	Mihe Gaomab	23	1994	N\$16.00
NWP44	<i>The Concept of Civil Society and the Process of Nation-Building in Africa</i>	Reinhard Kößler & Henning Melber	13	1994	N\$12.00
NWP45	<i>Namibian Development Services Directory</i>	Richard Moorsom	138	1994	N\$56.00
NWP46	<i>Credit Unions in Namibia: The Critical Issues</i>	Dirk Hansohm & Christiaan Keulder	27	1995	N\$17.00
NWP47	<i>Urbanisation and Urban Policies in Namibia</i>	Inge Tvedten & Moono Mupotola	41	1995	N\$17.00
NWP48	<i>Urbanisation and Internal Migration: Regional Dimensions in Post-Colonial Namibia</i>	Henning Melber	38	1996	N\$20.00
NWP49	<i>The State of the Informal Sector in Namibia: Role, Characteristics and Prospects</i>	Dirk Hansohm	23	1996	N\$16.00
NWP50	<i>Existing and Potential Entrepreneurs in Ondangwa, Oshakati, Swakopmund and Walvis Bay</i>	Gerson Kadhikwa, Tjiuai Kanguuehi & Anna Erastus-Sacharia	45	1996	N\$23.00
NWP51	<i>Consumer Price Index in Namibia: An Evaluation and an Analysis of its Reliability</i>	Mihe Gaomab	43	1996	N\$22.00
NWP52	<i>The economic policy framework for the promotion of small-and medium scale enterprises in Africa</i>	Dirk Hansohm	14	1996	N\$12.00
NWP53	<i>Projects and Opinions on Economic and Business Prospects in Windhoek</i>	Moono Mupotola-Sibongo	57	1996	N\$27.00
NWP54	<i>Seven Years Independence. Current Developments and Future Prospects in Namibia - Some Topical Highlights</i>	NEPRU	48	1997	N\$24.00
NWP55	<i>Renewal in Africa? The Informal Sector and its Promotion in Namibia, San Francisco, 23-25 November 1996</i>	Dirk Hansohm	28	1997	N\$17.00
NWP56	<i>Workshop Proceedings: The Effects of Liberalisation on the Beef and Maize Sector in Five SADC Countries</i>	Moono Mupotola-Sibongo (ed.)	100	1997	N\$42.00
NWP57	<i>Country Reports: The Effects of Liberalisation on the Beef and Maize sector in Five SADC Countries</i>	NEPRU	166	1997	N\$65.00
NWP58	<i>Training Needs Assessment Strategy Programme for Local Authorities in Namibia</i>	Hoster Bebi, Lesley Blaauw & Peter Nias	66	1997	N\$30.00
NWP59	<i>Livestock Buying and Quarantine Management in Caprivi</i>	Christiaan Keulder & Wolfgang Werner	46	1997	N\$23.10
NWP60	<i>From Communal Pastures to Enclosures: The Development of Land Tenure in Herero Reserves</i>	Wolfgang Werner	29	1997	N\$17.00
NWP61	<i>Land Reform in Namibia: The First Seven Years</i>	Wolfgang Werner	21	1997	N\$14.00
NWP62	<i>Namibian Business Climate: A Survey in relation to SADC</i>	Ntintin Oranje	32	1998	N\$12.00
NWP63	<i>The market for millet and millet products</i>	Cathy Presland, Akiser Pomuti	30	1998	N\$21.00
NWP64	<i>Namibia's Trade with Angola</i>	Klaus Schade	22	1998	N\$17.00
NWP65	<i>Twinning for Development: Cooperation between Public Institutions in Norway and Namibia</i>	Henning Melber & Inge Tvedten	26	1998	N\$19.00
NWP66	<i>Construction and Brick-Making in North Central</i>	Dirk Hansohm	24	1998	N\$18.00
NWP67	<i>Support Institutions for Small Enterprises in Zambia and Zimbabwe</i>	Dirk Hansohm, Anna Erastus-Sacharia, Gerson Kadhikwa	24	1998	N\$18.00

Appendix II

NEPRU Publications

as at 17-Dec-98

Publication ID	Title	Authors	No. of Pages	Year Published	Cost
NWP68	<i>The Role of Donors in Transitional Settings: The Case of Namibia (1990-1996)</i>	Henning Melber	30	1998	N\$21.00
TRAVEL AND MEETING REPORTS ISSN-1026-924X					
NTMR1	<i>Notes on the National Housing Seminar, Windhoek, 19-20 April 1990, convened by the Ministry of Local Government and Housing</i>	Jochbeth Andima	9	1992	N\$11.00
NTMR2	<i>Travel report on the NEPRU speaker/consultation tour of South Africa, 11-22 August 1991</i>	Tor Sellström	11	1992	N\$11.00
NTMR3	<i>Report on the National Conference on Youth Employment Strategies, convened by the Ministry of Youth and Sport, Windhoek, 26-28 February 1992</i>	John Orford & Ruth Bogosi	7	1992	N\$10.00
NTMR4	<i>Report on the Workshop on Gender Research Methodology, convened by the Development Cooperation Office of the Swedish Embassy, Windhoek, 9-13 March 1992</i>	John Orford & Ruth Bogosi	4	1992	N\$9.00
NTMR5	<i>Report on the National Workshop on Industrial Policy, convened by the Ministry of Trade and Industry, Windhoek, 27-28 April 1992</i>	Peter Amutenya, John Orford & Robin Sherbourne	29	1992	N\$18.00
NTMR6	<i>Population and development: a background report on the Third African Population Conference at Dakar, Senegal, 7-12 December 1992, with special reference to the Namibian situation</i>	Henning Melber	8	1993	N\$10.00
NTMR7	<i>Relocation of the veterinary cordon fence: report on IFAD field mission, October 1992</i>	Peter Amutenya	12	1993	N\$12.00
NTMR8	<i>Ministerial Meeting on Cross-Border Trade, Investment and Payments in Eastern and Southern Africa and the Indian Ocean Area, Kampala, Uganda, 27 August 1993</i>	Saul Kahuika	10	1994	N\$11.00
NTMR9	<i>SADC Workshop on the Productive Sector, Mbabane Swaziland, 1-4 November 1993</i>	Saul Kahuika	10	1994	N\$11.00
NTMR10	<i>Report on Avoiding Marginalisation: Can South and Southern Africa Become Globally Competitive</i>	Tjiuai Kanguuehi & Irene Tlhashe	10	1995	N\$10.00
NTMR11	<i>Two sub-region workshops on micro and small enterprises promotion, Gaborone, 2-5 November 1994</i>	Dirk Hansohm & Wendley Shiimi	11	1995	N\$11.00
NTMR12	<i>Senior policy workshop on stimulating and sustaining small and medium scale enterprises, Addis Ababa, 14-18 November 1994</i>	Dirk Hansohm & Wendley Shiimi	11	1995	N\$11.00
NTMR13	<i>SARIPS/SAPES Institutional and Academic Framework of the Masters in Policy Studies: Planning Meeting, Harare 8-10 March 1995</i>	Irene Tlhashe	11	1995	N\$11.00
NTMR14	<i>Third SEPAC Conference on Small Enterprise Promotion in Southern Africa, Gaborone, 31 October - 1 November 1996</i>	Dirk Hansohm & Anna Erastus-Sacharia	12	1996	N\$11.00
NTMR15	<i>39th Annual Meeting of the African Studies Association, San Francisco, 23-26 November 1996</i>	Dirk Hansohm	9	1997	N\$10.00
OCCASIONAL PAPERS ISSN-1026-9223					
NOP1	<i>Strategic Territory and Territorial Strategy: The Geopolitics of Walvis Bay's Integration into Namibia</i>	David Simon	65	1995	N\$30.00
NOP2	<i>The Collapse of State Socialism in Eastern Europe - Lessons for Southern Africa?</i>	Reinhardt Kossler	22	1995	N\$15.00
NOP3	<i>Scopes for Policies towards the Development of Informal Small Business in Namibia</i>	Mathias Seiche	88	1995	N\$38.00
NOP4	<i>Migrants, Money and the Military: The Social Epidemiology of HIV/AIDS in Ovambo, Northern Namibia</i>	Douglas Webb & David Simon	38	1995	N\$21.00
NOP5	<i>Namibia's Nominal and Real Multilateral Exchange</i>	John Orford	26	1995	N\$17.00
NOP6	<i>Should the Namibian Dollar be devaluated?</i>	Robin Sherbourne	28	1995	N\$17.00
NOP7	<i>'That weird Folly - Love for Work': On the Coming about of In Industrial Working Attitudes</i>	Reinhardt Kößler	12	1996	N\$12.00
NOP8	<i>What's in a map? Regional Projects in Windhoek, Namibia</i>	David Simon	43	1996	N\$22.00
NOP9	<i>Low-income Housing Projects in Windhoek, Namibia. A Contribution to Sustainable Urban Development?</i>	Astrid Seckemann	41	1997	N\$21.00

Appendix II		NEPRU Publications		as at 17-Dec-98		
Publication ID	Title	Authors	No. of Pages	Year Published	Cost	
NOP10	<i>Problems with the Establishment of a National Currency and an Independent Monetary Policy for a LDC. The Namibian Case</i>	Sophie Chauvin	37	1997	N\$19.00	
NOP11	<i>Domestic Workers' Daily Lives in Post-Apartheid Namibia</i>	Dorte Østreng	102	1997	N\$43.00	
NOP12	<i>From Reserve to Homeland: South African "Native" Policy in Southern Namibia</i>	Reinhart Kössler	68	1997	N\$30.00	
NOP13	<i>Namibia Since Independence: Lessons from the East Asian "Miracle"</i>	Thomas Hastings	36	1998	N\$23.00	
BRIEFING PAPERS						
NBP1/92	<i>Monetary independence for Namibia</i>	NEPRU	0	1992	N\$0.00	
NBP2/92	<i>Communal farmers in Namibia</i>	NEPRU	0	1992	N\$0.00	
NBP3/92	<i>Namibia and the Southern African Customs Union</i>	NEPRU	0	1992	N\$0.00	
NBP4/92	<i>Namibia's tax system</i>	NEPRU	0	1992	N\$0.00	
NBP5/92	<i>Economic links between Namibia and South Africa</i>	NEPRU	0	1992	N\$0.00	
NBP6/92	<i>Gender, research and planning</i>	NEPRU	0	1992	N\$0.00	
NBP9/96	<i>CPI in Namibia: An analysis of its Reliability</i>	NEPRU	0	1996	N\$0.00	
NBP10	<i>Renewal in Africa? The Informal Sector and its Promotion in Namibia*</i>	NEPRU	0	1997	N\$0.00	
VIEWPOINTS		ISSN-1027-1805				
NVP1	<i>NEPRU Viewpoint on Production & Investment</i>	NEPRU	0	1995	N\$0.00	
NVP2	<i>Focus on Poverty and Government Policy</i>	NEPRU	0	1996	N\$0.00	
NVP3	<i>Focus on the Annual Budget 1996/97</i>	NEPRU	0	1996	N\$0.00	
NVP4	<i>Quarterly Economic Review</i>	NEPRU	0	1996	N\$0.00	
NVP5	<i>Focus on Urbanisation, Migration and Regional Policy</i>	NEPRU	0	1996	N\$0.00	
NVP6	<i>Quarterly Economic Review</i>	NEPRU	0	1996	N\$0.00	
NVP7	<i>Quarterly Economic Review</i>	Hoster Bebi, Anne-Marie Brits, Mary Hansen, Ebson Uanguta, Dirk Hansohm & Cathy Presland	0	1997	N\$0.00	
NVP8	<i>Focus on the Annual Budget 1997/98</i>	Dirk Hansohm, Henning Melber, Peter Nias & Ebson Uanguta	0	1997	N\$0.00	
NVP9	<i>Focus on the Effects of Liberalisation on the Beef & Maize Sectors in Five SADC Countries.</i>	Moono Mupotola-Sibongo, Wolfgang Werner, Klaus Schade, Lesley Blaauw	0	1997	N\$0.00	
NVP10	<i>National Development Plan 1</i>	Anna Erastus-Sacharia, John Motinga, Peter Nias & Ebson Uanguta	0	0	N\$0.00	
NVP11	<i>Quarterly Economic Review</i>	Felicien Arigbo, Hoster Bebi, Mary Hansen, Dirk Hansohm, John Motinga, Cathy Presland, Klaus Schade, Ebson Uanguta & Wolfgang Werner	0	1997	N\$0.00	
NVP12	<i>Quarterly Economic Review</i>	Felicien Arigbo, Hoster Bebi, Dirk Hansohm, Henning Melber, Klaus Schade, Ebson Uanguta	0	1997	N\$0.00	
NVP13	<i>Quarterly Economic Review</i>	Dirk Hansohm, John Motinga, Hoster Bebi, Wolfgang Werner, Lesley Blaauw & Cathy Presland	0	1997	N\$0.00	
NVP14	<i>Quarterly Economic Review</i>	Lesley Blaauw, Dirk Hansohm, Esau Kaakunga, John Motinga, Klaus Schade and Wolfgang Werner	0	1998	N\$0.00	
NVP15	<i>Off-Shore Resources and Infrastructure in Perspective</i>	John Motinga and Wolfgang Werner	0	1998	N\$0.00	
NVP16	<i>Quarterly Economic Review</i>	Lesley Blaauw, Dirk Hansohm, Esau Kaakunga and Klaus Schade	0	1998	N\$0.00	
NVP17	<i>Focus on the SADC Free Trade Area</i>	Lesley Blaauw, Mary Hansen and John Motinga	0	1998	N\$0.00	
NVP18	<i>Quarterly Economic Review</i>	Lesley Blaauw, Dirk Hansohm, Ntintin Oranje and Klaus Schade	0	1998	N\$0.00	

**Appendix III List of external publications by NEPRU staff members:
1 April 1997 - 31 March 1998**

Dirk Hansohm

“Namibias informella sektor - Nystart eller sista utväg?” in Hans Öhrn (ed.),
Överlevnadsstrategier i södra Afrika, Solna: Afrikagrupperna, pp. 143 - 147.

Dirk Hansohm

“Namibian Economic Review” in First National Bank of Namibia Annual Report 1997,
pp. 14 - 15.

Dirk Hansohm/Klaus Schade

“Namibia: An overview” in The Mercantile, Zimbabwe’s Business and Economic
Guide to Southern Africa. Vol. 2, Issue 7, Dec./Jan. 1997, pp. 28 - 30.

Dirk Hansohm/Klaus Schade

“Macroeconomic overview” in New Era, 8th Anniversary of Namibian Independence
Special, 21 March 1998.

Henning Melber

“Namibian and proud of it” in Andreas Foitzik/Athanasios Marvakis (eds), Tarzan was
nun? Internationale Solidarität im Dschungel der Widersprüche. Hamburg: Libertäre
Assoziation 1997, pp. 15 - 25.

Henning Melber

“Namibia” in Afrika Jahrbuch 1996. Ed. by Institut für Afrika-Kunde/Rolf Hofmeier.
Opladen: Leske & Budrich 1997, pp. 370 - 375.

Henning Melber

“Namibias nachkolonialer Alltag: Eine “Befreiungsbewegung an der Macht” in
Jahrbuch Dritte Welt 1998. München: Beck 1997, pp. 95 - 112.

Henning Melber

“Namibia’s Public Sector: Continued peace or smaller service?” in Namibia Review,
Vol. 6, No. 2, March/April 1997, pp. 31 - 34.

Henning Melber

“Aid and Donors in Namibia - An Overview” in Economic Newsletter No. 7, July 1997,
pp. 16 - 23 (also published in a German version in Afrika Süd, No. 5
September/October 1997, pp. 30 - 32).

Henning Melber

“On Public Morality, Ethics and Legitimacy” in The Namibian, 19 September 1997
(German version published in Allgemeine Zeitung, 19 September 1997).

Henning Melber

**Appendix III List of external publications by NEPRU staff members:
1 April 1997 - 31 March 1998**

“Poverty and Unemployment” in New Era, 21 March 1998 (8th Namibian Independence Anniversary Special).

Henning Melber (ed.) /Mihe Gaomab /Dirk Hansohm /Cathy Presland /Wolfgang Werner (contributors) /Mary Hansen (technical assistance)

Seven Years of Independence: Current Developments and Future Prospects in Namibia - Some Topical Highlights. Centre for Southern African Studies/School of Government, University of the Western Cape, Bellville 1997 (Southern African Perspectives, No. 64).

Daniel Motinga /Glen-Marie Lange

“The Contribution of Resource Rents from Minerals and Fisheries to Sustainable Economic Development in Namibia”. Directorate of Environmental Affairs (DEA) Research Discussion Paper no. 19, June 1997.

Daniel Motinga/Glen-Marie Lange/Jon Barnes

Cattle Numbers, Biomass, Productivity, and Land Degradation in the Commercial Farming Sector of Namibia, 1915 to 1995. Directorate of Environmental Affairs (DEA) Research Discussion Paper No. 17, June 1997.

Wolfgang Werner

“Land reform in Namibia: the first seven years”. BAB Working Paper No. 5: 1997. Basel: Basler Afrika Bibliographien.

**Appendix IV Participation of NEPRU staff in International Conferences,
Courses, Seminars and/or Workshops:
1 April 1997 - 31 March 1998**

1. The Role of Donors in Transitional Settings: The Case of Post-Conflict Southern Africa. Organised by the International Development Research Centre. Magaliesburg, Republic of South Africa, 17 to 18 April 1997 (Henning Melber presenting a paper on "The Role of Donors in Transitional Settings: The Case of Namibia").
2. European Conference on Southern Africa. Organised by the European Network for Information and Action on Southern Africa. Maastricht, The Netherlands, 17 to 19 April 1997 (Henning Melber presenting a paper on "Political Processes and Democratisation: Engaging the Public in Europe and Southern Africa").
3. Regional Forum on Poverty Eradication in Southern Africa - Phase 1. Organised by UNIC Harare, Pretoria and Windhoek. Windhoek, Namibia, 13 to 15 May 1997 (Klaus Schade presenting a "Background paper on Namibia's efforts in Poverty Alleviation").
4. 4th Annual Conference on Environmental Economics, Accounting for Land Use. Sponsored by the Swedish University of Agricultural Sciences. Ulvön, Sweden, 17 to 19 June 1997 (Daniel Motinga presenting a paper on "Designing a sustainable future with NRA: The experience in Namibia and implications for Southern Africa").
5. Regional Workshop on Social Policy in Context of Reform. Organised by SAPEs. Harare, Zimbabwe, 21 to 22 July 1997 (Anna Erastus Sacharia, Mary Hansen and Klaus Schade presenting a paper on the "Overview of Poverty in Namibia").
6. Regionalisation of the world economy and consequences for Southern Africa. Organised by the Deutsche Stiftung für Internationale Entwicklung. Midgard, Namibia, 13 to 17 August 1997 (Mary Hansen and Dirk Hansohm presenting a paper on "Economic independence versus regional integration and globalisation in Southern Africa - The case of Namibia. Towards a cost-benefit analysis", Esau Kaakunga and Henning Melber).
7. "Internet as a Possibility to Improve Communication for Private Organisations", organised by Carl Duisberg Gesellschaft e.V. (CDG), sponsored by the Federal Minister for Economic Co-operation & Development on behalf of the Government of the Federal Republic of Germany, Harare, Zimbabwe, 18 to 22 August 1997 (Aldenia Chaka).
8. Symposium on "The Culture, History and Economy of Otjiherero speaking people". Organised by Abbey of Michaelsburg. Siegburg, Germany, 14 to 16 September 1997 (Wolfgang Werner presenting a paper on "Development of Land Tenure in Herero Reserves in Namibia").
9. 1997 Annual Colloquium of the Southern African Regional Institute for Policy Studies (SARIPS of SAPEs Trust) on Labour Markets and Migration Policy. Organised by SARIPS. Harare, Zimbabwe, 21 to 24 September 1997 (Henning

**Appendix IV Participation of NEPRU staff in International Conferences,
Courses, Seminars and/or Workshops:
1 April 1997 - 31 March 1998**

Melber presenting a paper on “The SADC Protocol on Free Movement of People in the SADC: A Re-Examination”).

10. SAPES/SARIPS Social Policy Project Meeting. Organised by SAPES. Harare, Zimbabwe, September 1997 (Daniel Motinga and Klaus Schade presenting a paper jointly written with Anna Erastus Sacharia and Mary Hansen on “Overview of Poverty in Namibia”).
11. Symposium on “The Africa Policy of the two Germanies 1955-1990 and Implications for Southern Africa”. Organised by the Mayibuye Centre and the Centre for Southern African Studies at the University of the Western Cape, with the Department of History at the University of Hannover. Robben Island, South Africa, 25 to 26 September 1997 (Henning Melber presenting panel contributions on “The Two Germanies in Southern Africa: A Namibian Perception” and on “Solidarity with whom and with what?”).
12. Achieving economic growth - a task for business, labour and government. Organised by Rutgers University (USA), the University of Namibia and NEPRU. Windhoek, Namibia, 6 to 7 October 1997 (Dirk Hansohm presenting a paper on “Namibia’s integration into the world economy. Towards a cost-benefit analysis”).
13. Role of the State in Poverty Alleviation. Organised by the Comparative Research Programme on Poverty (CROP), the Botswana Institute for Development Policy Analysis (BIDPA) and the University of Botswana. Gaborone, Botswana, 8 to 11 October 1997 (Dirk Hansohm presenting a paper jointly written with Cathy Presland on “Poverty and Policy in Namibia”).
14. The Implementation of the Co-ordinated African Programme of Assistance on Services (CAPAS). Organised by UNCTAD/CAPAS. Helderfontein, Johannesburg, South Africa, 27 to 29 November 1997 (Dirk Hansohm and Esau Kaakunga).
15. Resource Accounting meeting. Organised by the Beijer Institute of International Ecological Economics and EENESA. Zanzibar, Tanzania, 1 to 4 December 1997 (Daniel Motinga).
16. International Conference on Land Tenure in the Developing World with a Focus on Southern Africa. Organised by the University of Cape Town. Cape Town, South Africa, 27 to 29 January 1998 (Wolfgang Werner).
17. Regional Seminar on Communication and Co-operation in an Intercultural Context. Organised by Services Overseas. Mombasa, Kenya, 1 to 8 February 1998 (Dirk Hansohm, Klaus Schade and Wolfgang Werner).
18. Regional Workshop on Strengthening Small and Micro-enterprise Support Institutions in the areas of Training, Technology promotion and Information services through information and communication technologies. Organised by the International Development Research Centre (IDRC). Johannesburg, South

**Appendix IV Participation of NEPRU staff in International Conferences,
Courses, Seminars and/or Workshops:
1 April 1997 - 31 March 1998**

Africa, 22 to 26 February 1998 (Dirk Hansohm presenting a paper jointly written with Anna Erastus Sacharia and Lesley Blaauw on “The promotion of SME in Southern Africa. Some observations relevant for co-operation among SME service providers and the use of information technology”).

19. Political and Economic Priorities in support of Regional Co-operation and Integration in Southern Africa. Organised by Konrad Adenauer Foundation. Regional Seminar. Organised by the Personnel Agency of the German Catholics for International Co-operation (AGEH). Mariannhill, Durban, of South Africa, 8 to 15 March 1998 (Henning Melber presenting a lecture on “Reconciliation and Development - Policies and Processes in Southern Africa”)
20. Workshop on the SADC Regional Human Development Report. Organised by the UNDP. Ezulwini, Swaziland. 26 to 27 March 1998 (Henning Melber as a member of the Review Committee).